

CUT BANK, MONTANA

AL-484 (FAA)

25163

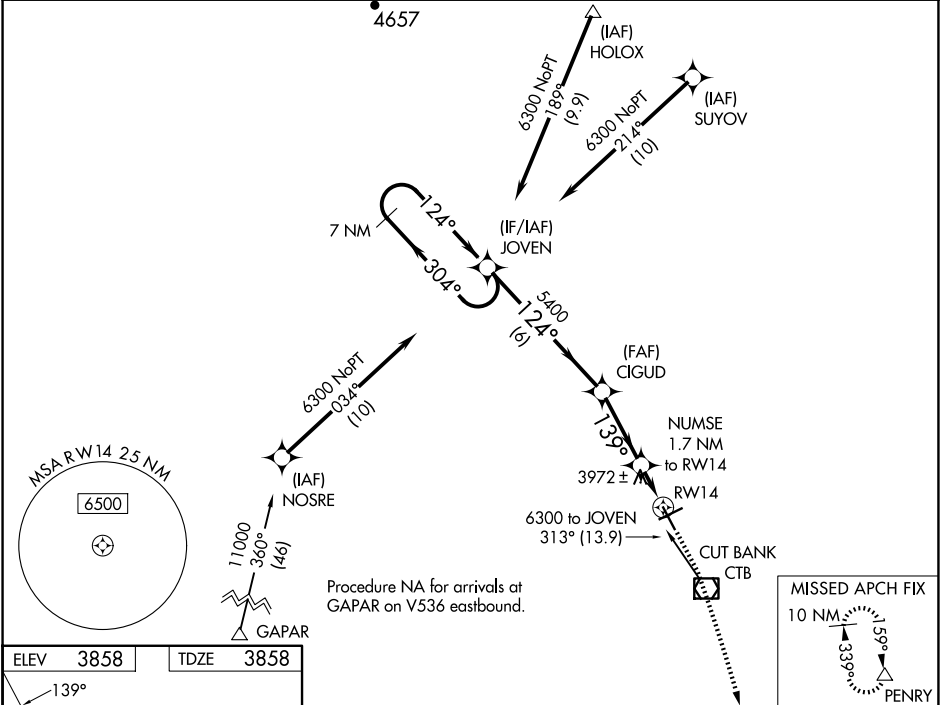
WAAS CH <b>93537</b> <b>W14A</b>	APP CRS <b>139°</b>	Rwy Ldg TDZE <b>3858</b> Apt Elev <b>3858</b>
--	------------------------	---

# RNAV (GPS) RWY 14

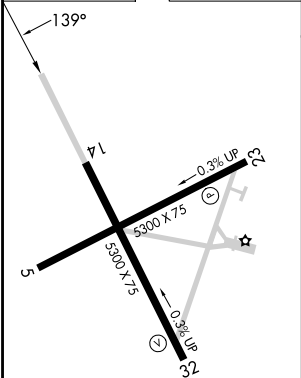
CUT BANK INTL (CTB)

 -28°C	For uncompensated Baro-VNAV systems, LNAV/VNAV NA below -25°C (-13°F) or above 51°C (124°F). DME/DME RNP-0.3 NA.	MISSED APPROACH: Climb to 4400 then climbing right turn to 9000 direct PENRY and hold.
-----------	---	--

ASOS <b>119.025</b>	SALT LAKE CITY CENTER <b>133.4 285.4</b>	UNICOM <b>123.0 (CTAF) 0</b>
------------------------	---	---------------------------------



ELEV	3858	TDZE	3858
------	------	------	------



7 NM Holding Pattern				
JOVEN				
CIGUD				
NUMSE 1.7 NM to RW14				
RW14				
*1 NM to RW14				
*4440				
6 NM				
3 NM				
0.7				
1 NM				
CATEGORY	A	B	C	D
LPV DA	4058-1		200 (200-1)	
LNAV/VNAV DA	4108-1		250 (300-1)	
LNAV MDA	4240-1	382 (400-1)	4240-1½	382 (400-1½)
CIRCLING	4280-1 422 (500-1)	4320-1 462 (500-1)	4400-1½ 542 (600-1½)	4620-2½ 762 (800-2½)

REIL Rwy 32 0  
MIRL Rwy 5-23 and 14-32 0

CUT BANK, MONTANA  
Orig-B 07DEC17

48°37'N-112°23'W

# RNAV (GPS) RWY 14

NW-1, 07 AUG 2025 to 04 SEP 2025