

23278

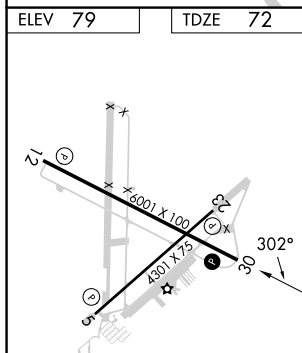
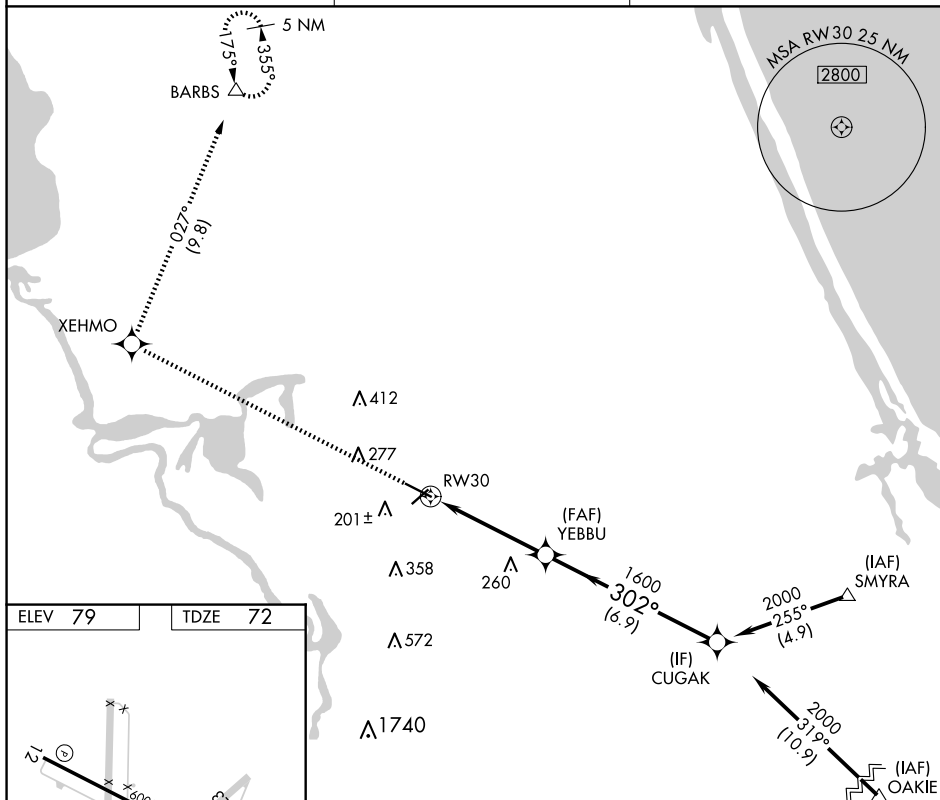
RNAV (GPS) RWY 30
DELAND MUNI-SIDNEY H TAYLOR FLD (DED)

T Rwy 30 helicopter visibility reduction below $\frac{3}{4}$ SM NA. VDP NA when
A using Daytona Beach Intl altimeter setting. When local altimeter setting
not received, use Daytona Beach Intl altimeter setting and increase all MDAs
40 feet.

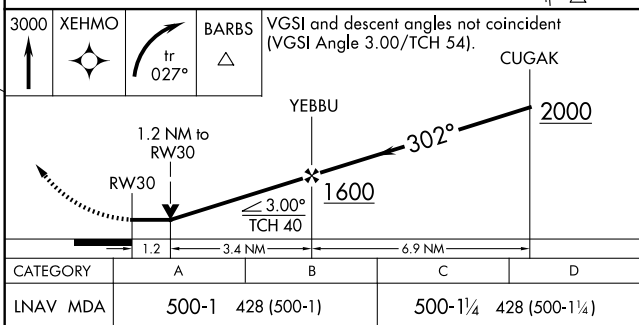
MISSED APPROACH: Climb to 3000
direct XEHMO and right turn on track
027° direct BARBS and hold.

DAYTONA APP CON
125.35 322.3

UNICOM
123.075 (CTAF) **L**



HIRL Rwy 12-30 **L**
MIRL Rwy 5-23 **L**
REIL Rwys 12 and 30 **L**



DELAND, FLORIDA
Orig-B 18JUL19

DELAND MUNI-SIDNEY H TAYLOR FLD (DED)
29°04'N-81°17'W **RNAV (GPS) RWY 30**