

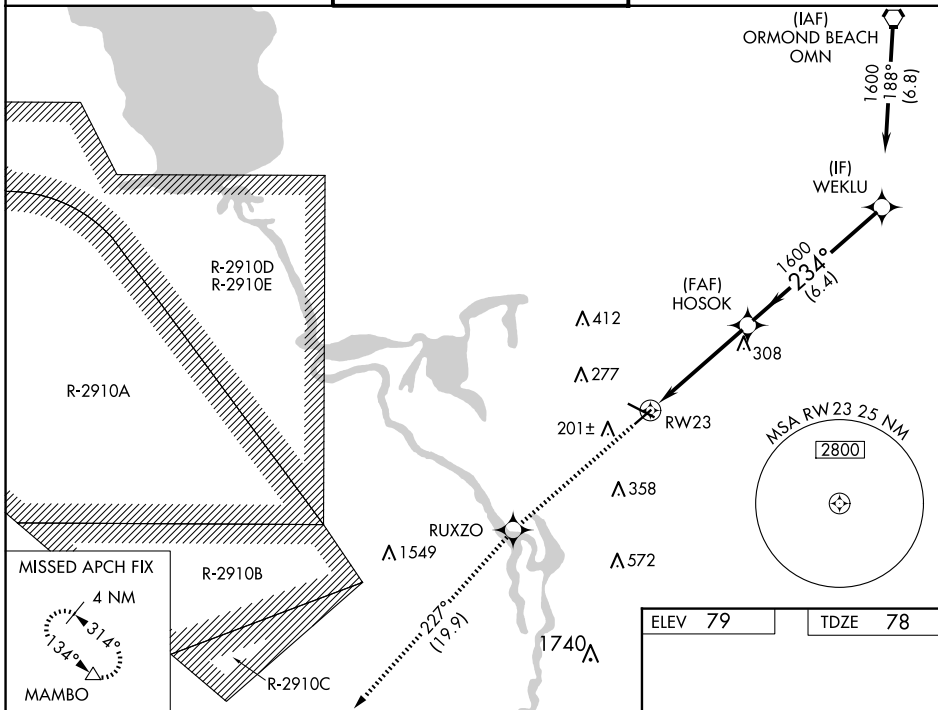
23278

RNAV (GPS) RWY 23
DELAND MUNI-SIDNEY H TAYLOR FLD (DED)

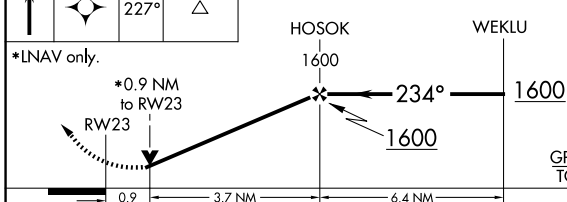
▼ For uncompensated Baro-VNAV systems, LNAV/VNAV NA below -15°C (5°F) or above 54°C (130°F).
▲ Baro-VNAV and VDP NA when using Daytona Beach Intl altimeter setting. Rwy 23 helicopter visibility reduction below 3/4 SM NA. When local altimeter setting not received, use Daytona Beach Intl altimeter setting and increase all DA 38 feet and all MDA 40 feet, increase LPV visibility 1/2 SM all Cats.

MISSED APPROACH:
Climb to 3000 direct
RUXZO and on track
227° to MAMBO
and hold.

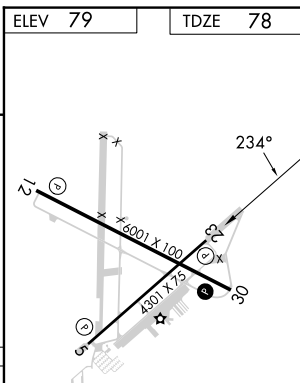
UNICOM
123.075 (CTAF) **L**



3000	RUXZO	tr	MAMBO	VGSI and RNAV glidepath not coincident (VGSI Angle 3.00/TCH 67).
------	-------	----	-------	--



CATEGORY		A	B	C	D
LPV	DA	374-1 296 (300-1)			
LNAV/ VNAV	DA	414-1¼ 336 (400-1¼)			
LNAV	MDA	420-1 342 (400-1)			



HIRL Rwy 12-30 **L**
MIRL Rwy 5-23 **L**
REIL Rwys 12 and 30 **L**

DEL
29°04'N-81°17'W

DELAND MUNI-SIDNEY H TAYLOR FLD (DED)
17'W **RNAV (GPS) RWY 23**