

ALTUS, OKLAHOMA

VOR or TACAN RWY 36L

VORTAC LTS <b>109.8</b> Chan <b>35</b>	APCH CRS <b>360°</b>	Rwy Idg <b>13,440</b> TDZE <b>1354</b> Arpt Elev <b>1382</b>
--	-------------------------	--

AL-482 [USAF]

ALTUS AFB (KLTS)

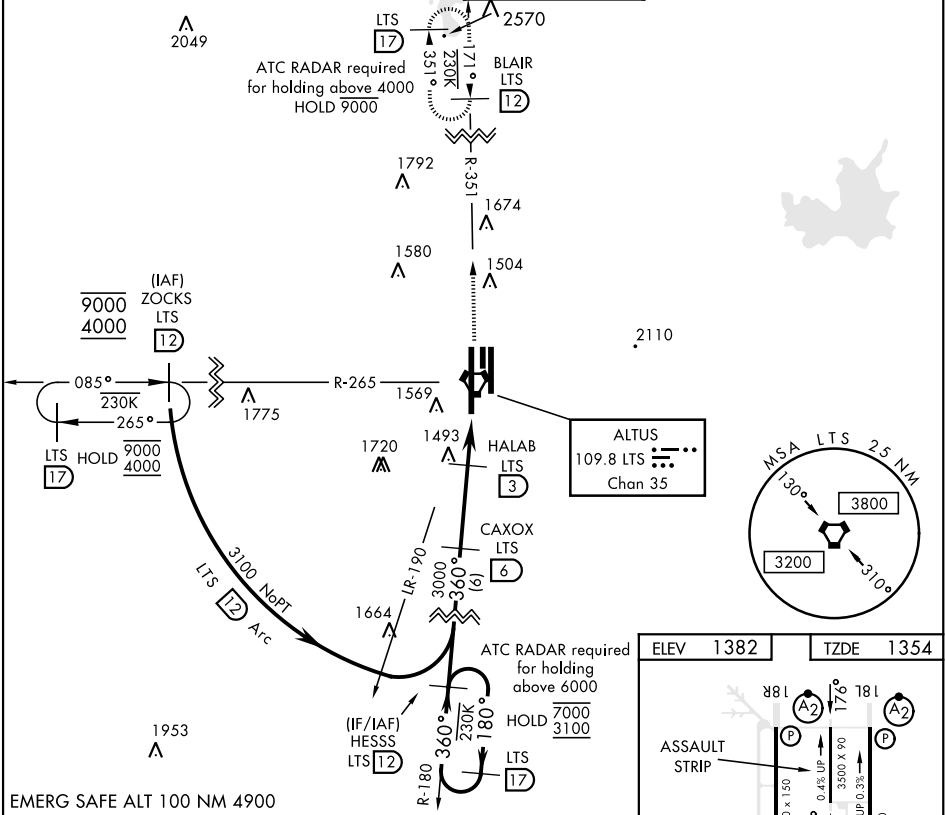
DME required.

- ▼ \* When ALS inop, increase CAT AB RVR to 55 and vis to 1 mile,  
CAT CDE RVR to 60 and vis to 1½ miles.  
\*\* Circling not authorized W of Rwy 18R-36L.

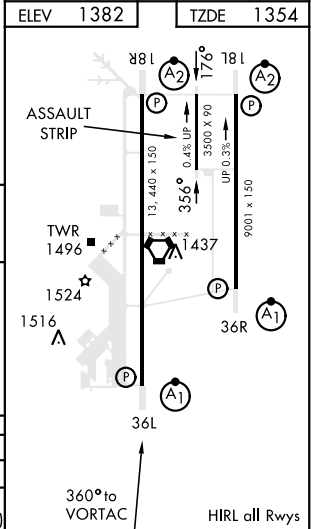
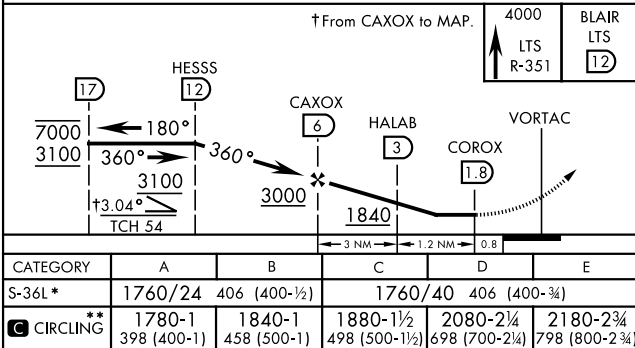


MISSED APPROACH: Climb to 4000 on  
LTS VORTAC R-351 to BLAIR and hold.

ATIS ★ <b>109.8 273.5</b>	FORT WORTH CENTER <b>133.5 350.35</b>	APP CON <b>125.1 353.7</b>	TOWER ★ <b>119.65 254.4</b>	GND CON <b>121.85 275.8</b>	CLNC DEL <b>120.65 284.7</b>
------------------------------	--	-------------------------------	--------------------------------	--------------------------------	---------------------------------



EMERG SAFE ALT 100 NM 4900



ALTUS, OKLAHOMA

34°40'N-99°16'W

ALTUS AFB (KLTS)

Amtd 4 14JUL22

VOR or TACAN RWY 36L

SC-1, 07 AUG 2025 to 04 SEP 2025

SC-1, 07 AUG 2025 to 04 SEP 2025