

ALTUS, OKLAHOMA

RNAV (GPS) Z RWY 36R

| | | |
|----------|-----------|------|
| APCH CRS | Rwy Idg | 9001 |
| 355° | TDZE | 1361 |
| | Arpt Elev | 1382 |

AL-482 (USAF)

ALTUS AFB (KLTS)

RNP APCH. DME/DME RNP-0.3 NA

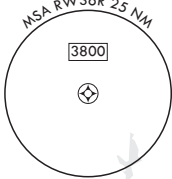
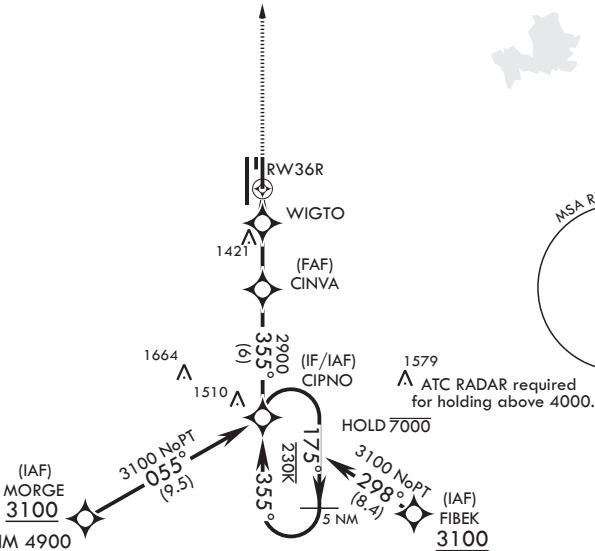
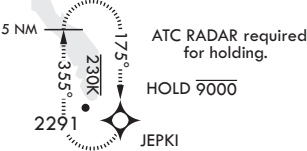
* When ALS inop increase RVR to 40, vis to 3/4 mile.
** When ALS inop increase CAT AB RVR to 55, vis to 1 mile; CAT CDE RVR 50, vis to 1 mile.

| | |
|--------|---|
| ALSF-1 | MISSED APPROACH: Climb to 4000 direct JEPKI and hold. |
|--------|---|

| | | | | | |
|-------------|-------------------|-------------|--------------|--------------|--------------|
| ATIS★ | FORT WORTH CENTER | APP CON | TOWER★ | GND CON | CLNC DEL |
| 109.8 273.5 | 133.5 350.35 | 125.1 353.7 | 119.65 254.4 | 121.85 275.8 | 120.65 284.7 |

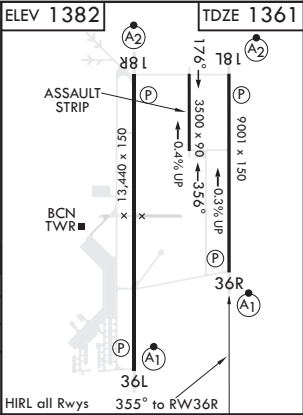
*** Circling NA W of Rwy 36L-18R.

For uncompensated
Baro-VNAV systems,
procedure NA below -17°C
(2°F) or above 54°C (130°F).



EMERG SAFE ALT 100 NM 4900

| | | | | | | | |
|---------------|-----------------------|--|-------------------------|-------------------------|-------------------------|-----------|-----------|
| 4000 | JEPKI | VGSI and RNAV glidepath not coincident. | CIPNO | 175° | 3100 | ELEV 1382 | TDZE 1361 |
| | | | | | | | |
| CATEGORY | A | B | C | D | E | | |
| LNAV/VNAV DA* | 1611/24 | | 250 | (300-½) | | | |
| LNAV MDA** | 1700/24 | 339 (400-½) | 1700/26 | 339 | (400-½) | | |
| CIRCLING*** | 1780-1 398 (400-1) | 1840-1 458 (500-1) | 1880-1½ 498 (500-1½) | 2080-2¼ 698 (700-2¼) | 2180-2¾ 798 (800-2¾) | | |



ALTUS, OKLAHOMA

34°40'N - 99°16'W

ALTUS AFB (KLTS)

Amdt 3 14JUL22

RNAV (GPS) Z RWY 36R