

## ALTUS, OKLAHOMA

RNAV (GPS) Z RWY 18R

APCH CRS 175°	Rwy Idg 13,440 TDZE 1378 Arpt Elev 1382
------------------	---

AL-482 (USAF)

ALTUS AFB (KLTS)

RNP APCH, DME/DME RNP-0.3 NA

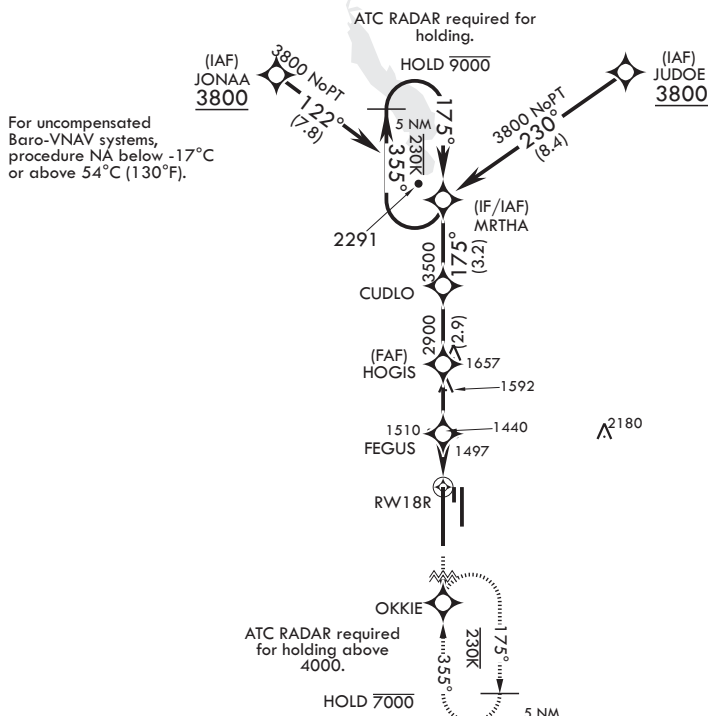


**MISSED APPROACH:** Climb to 4000 direct OKKIE and hold.

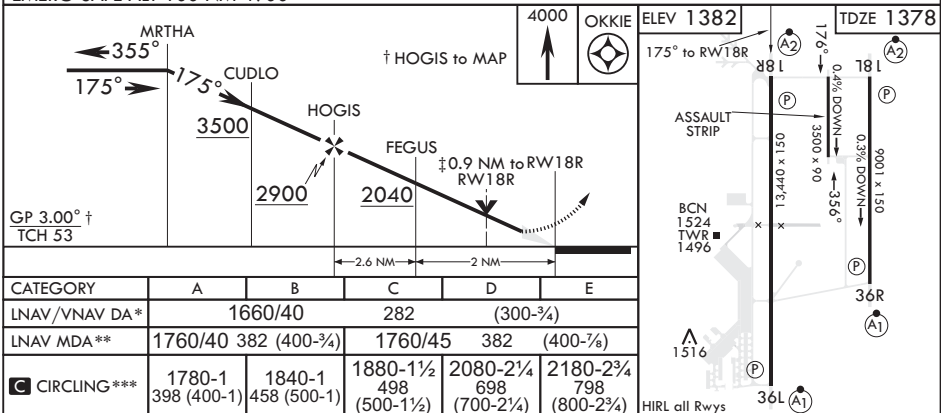
**T** \* When ALS inop, increase RVR to 45, vis to 7/8 mile.  
 \*\* When ALS inop, increase CAT AB RVR to 55, vis to 1 mile;  
 CAT CDE RVR to 60, vis to 1 1/8 miles.

ATIS★ 109.8 273.5	FORT WORTH CENTER 133.5 350.35	APP CON 125.1 353.7	TOWER★ 119.65 254.4	GND CON 121.85 275.8	CLNC DEL 120.65 284.7
----------------------	-----------------------------------	------------------------	------------------------	-------------------------	--------------------------

\*\*\* Circling NA W of Rwy 18R-36L.



EMERG SAFE ALT 100 NM 4900



ALTUS, OKLAHOMA

34°40'N - 99°16'W

ALTUS AFB (KLTS)

Amdt 3 14JUL22

RNAV (GPS) Z RWY 18R