

ALTUS, OKLAHOMA

RNAV (GPS) Z RWY 18L

APCH CRS	Rwy Idg	9001
175°	TDZE	1382
	Arpt Elev	1382

AL-482 (USAF)

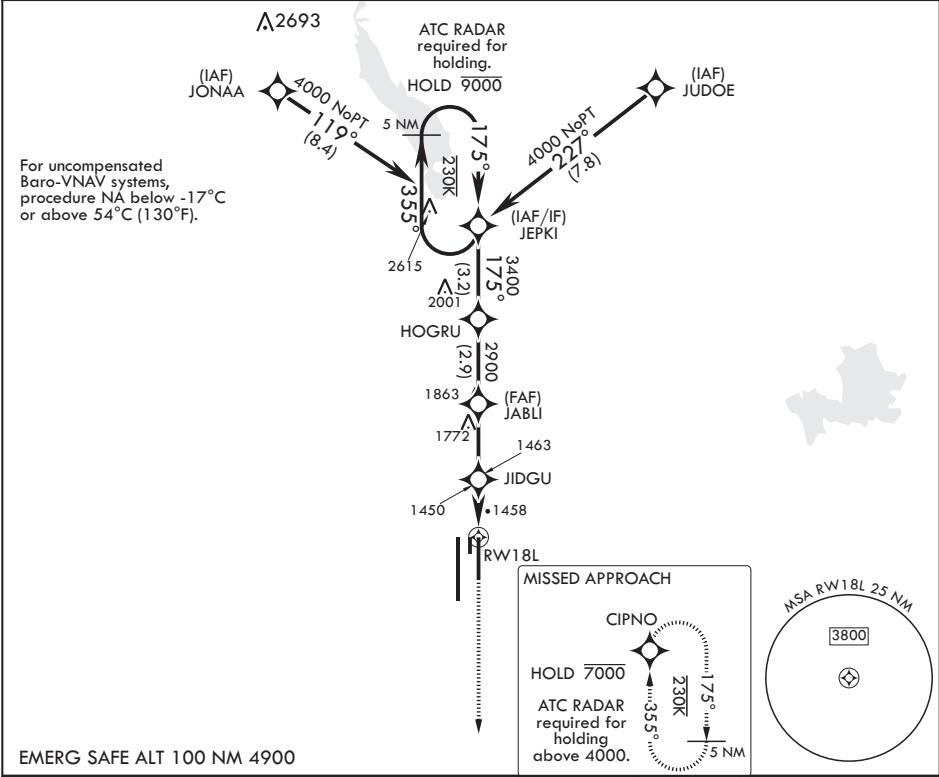
ALTUS AFB (KLTS)

RNP APCH. DME/DME RNP-0.3 NA

V * When ALS inop, increase RVR to 55, vis to 1 mile.
** Circling NA W of Rwy 18R-36L.

MISSED APPROACH: Climb to 4000 direct CIPNO and hold.

ATIS★	FORT WORTH CENTER	APP CON	TOWER★	GND CON	CLNC DEL
109.8 273.5	133.5 350.35	125.1 353.7	119.65 254.4	121.85 275.8	120.65 284.7



4000	JEPKI	355°	175°	HOGRU	3400	JABLI	JIDGU	1 NM to RWY 18L	RWY 18L	4000	CIPNO	ELEV 1382	TDZE 1382
GP 3.00°	TCH 46				2900	2040	2.6 NM	2 NM					
CATEGORY	A	B	C	D	E								
LNAV/VNAV DA		1632/40	250	(300-¾)									
LNAV MDA*		1760/40	378	(400-¾)									
CIRCLING**	1780-1 398 (400-1)	1840-1 458 (500-1)	1880-1½ 498 (500-1½)	2080-2¼ 698 (700-2¼)	2180-2¾ 798 (800-2¾)								

ALTUS, OKLAHOMA

34°40'N - 99°16'W

ALTUS AFB (KLTS)

Amdt 3 14JUL22
TERPS

RNAV (GPS) Z RWY 18L

SC-1, 07 AUG 2025 to 04 SEP 2025

SC-1, 07 AUG 2025 to 04 SEP 2025