

ALTUS, OKLAHOMA

RNAV (RNP) Y RWY 18L

APCH CRS	Rwy Idg
175°	9001
TDZE	1382
Arpt Elev	1382

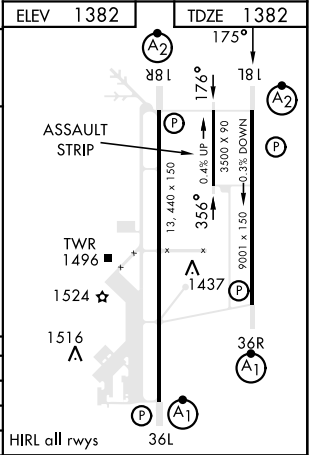
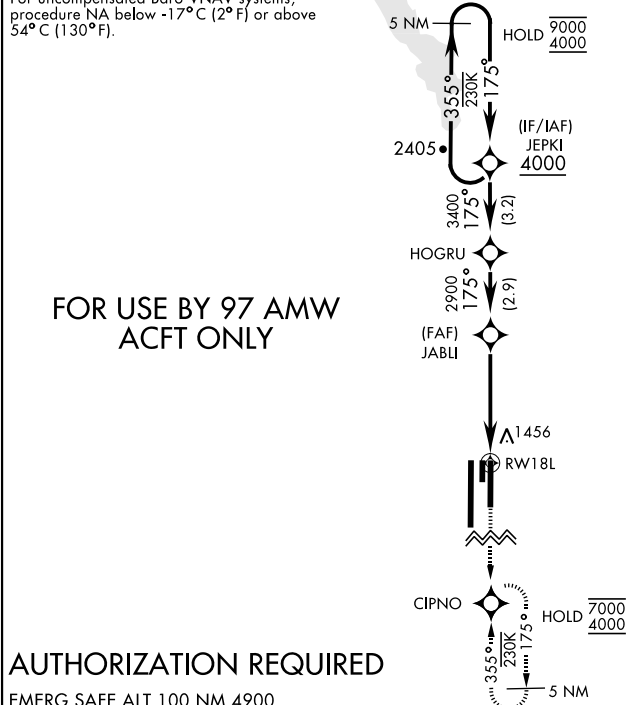
AL-482 [USAF]

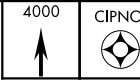
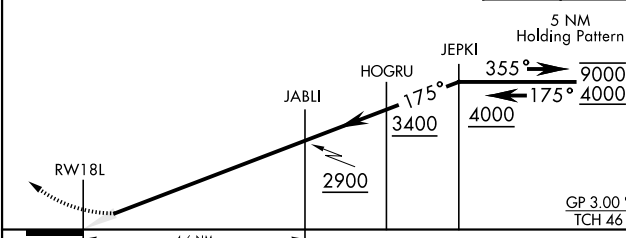
ALTUS AFB (KLTS)

RNP AR APCH - GPS	SALSF 	MISSED APPROACH: Climb to 4000 direct CIPNO and hold.
V* When ALS inop, increase RVR to 45, vis to 7/8 mile. ** When ALS inop, increase RVR to 55, vis to 1 mile.		

ATIS ★	FORT WORTH CENTER	APP CON	TOWER ★	GND CON	CLNC DEL
109.8 273.5	133.5 350.35	125.1 353.7	119.65 254.4	121.85 275.8	120.65 284.7

For uncompensated Baro-VNAV systems, procedure NA below -17°C (2°F) or above 54°C (130°F).



				
5 NM Holding Pattern				
				
CATEGORY	A	B	C	D
RNP 0.10 DA*	1644/40	262	(300-¾)	
RNP 0.30 DA**	1729/40	347	(400-¾)	
CIRCLING	NOT AUTHORIZED			

ALTUS, OKLAHOMA

34°40'N-99°16'W

ALTUS AFB (KLTS)

Amdt 2 10AUG23

RNAV (RNP) Y RWY 18L

SC-1, 07 AUG 2025 to 04 SEP 2025

SC-1, 07 AUG 2025 to 04 SEP 2025