

ALTUS, OKLAHOMA

RNAV (RNP) X RWY 18R

APCH CRS	Rwy Idg	13,440
175°	TDZE	1378
	Arpt Elev	1382

AL-482 (USAF)

ALTUS AFB (KLTS)

RNP AR APCH - RF

▼ * When ALS inop, increase RVR to 45, vis to 7/8 mile.
** When ALS inop, increase RVR to 60, vis to 1 1/8 miles.



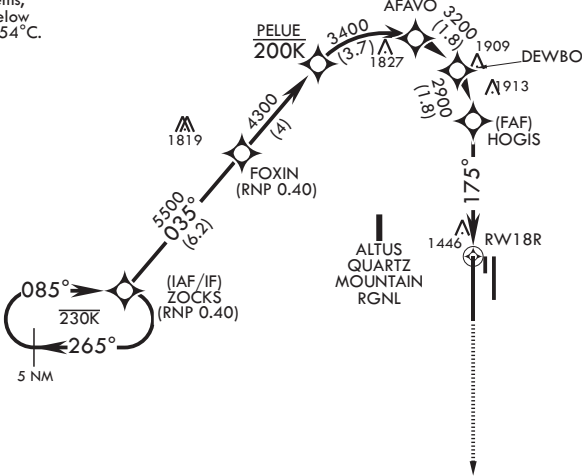
MISSED APPROACH: Climb to 4000 on track 175° to OKKIE and hold.

ATIS★ 109.8 273.5	APP CON 125.1 353.7	TOWER★ 119.65 254.4	GND CON 121.85 275.8	CLNC DEL 120.65 284.7
----------------------	------------------------	------------------------	-------------------------	--------------------------

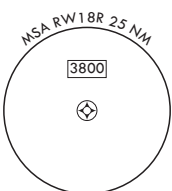
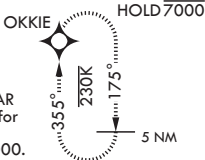
For uncompensated Baro-VNAV systems, procedure NA below -17°C or above 54°C.

Max 200 KIAS until DEWBO

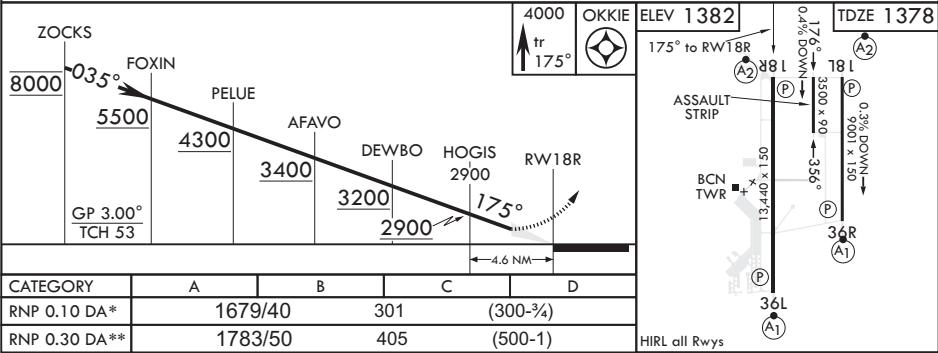
2258



AUTHORIZATION
REQUIRED
FOR USE BY 97
AMW ACFT ONLY



EMERG SAFE ALT 100 NM 4900



ALTUS, OKLAHOMA

34°40'N - 99°16'W

ALTUS AFB (KLTS)

Amndt 2 14JUL22

RNAV (RNP) X RWY 18R