

AL-482 [USAF]

Rwy	Knots	60	120	180	240	300	360
18L	V/V(fpm)	300	600	900	1200	1500	1800
18R	V/V(fpm)	360	720	1080	1440	1800	2160

ATIS ★ 109.8 273.5  
CLNC DEL  
120.65 284.7  
GND CON  
121.85 275.8  
ALTUS TOWER ★  
119.65 254.4  
ALTUS DEP CON  
125.1 290.9  
FORT WORTH CENTER  
133.5 350.35  
ALTUS APP CON  
125.1 353.7

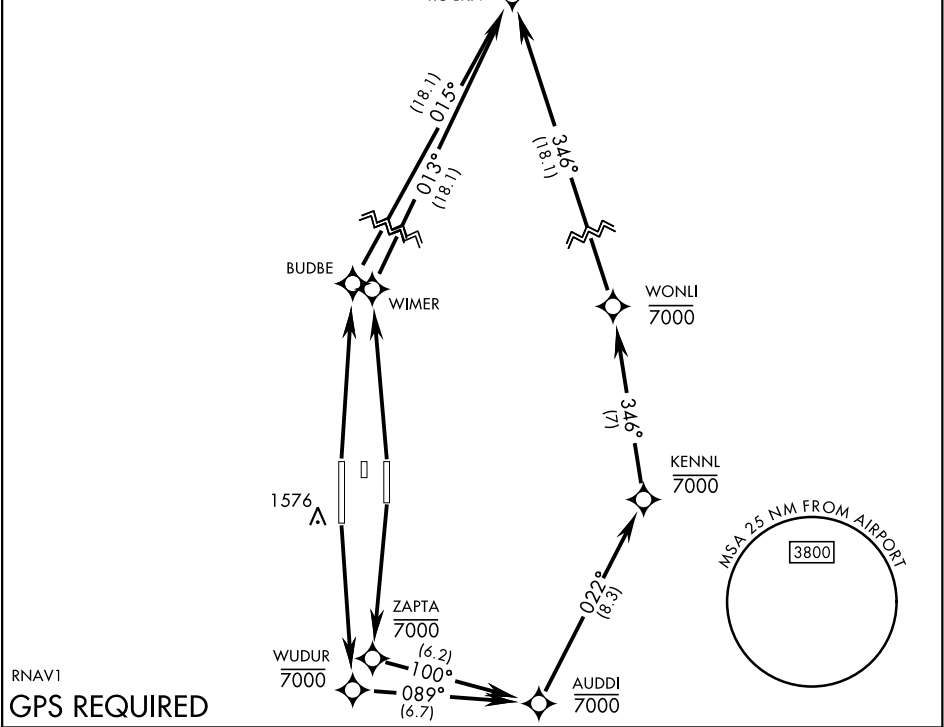
BURNS FLAT BFV

Minimum Climb Rate to 1900

WILL ROGERS TRANSITION

WILL ROGERS IRW

**TOP ALTITUDE: 9000**



**DEPARTURE ROUTE DESCRIPTION**

**TAKEOFF RWY 18L:** Climb direct ZAPTA, then on depicted route to ROCKN. Cross WONLI at or below 7000, thence...

**TAKEOFF RWY 18R:** Climb direct WUDUR, then on depicted route to ROCKN. Cross WONLI at or below 7000, thence...

**TAKEOFF RWY 36L:** Climb direct BUDBE, then track 015° to ROCKN, thence...

**TAKEOFF RWY 36R:** Climb direct WIMER, then track 013° to ROCKN, thence...

...via transition or assigned route. Maintain 9000. Expect filed altitude 10 minutes after departure.

**BURNS FLAT TRANSITION (ROCKN3•BFV):** From over ROCKN track 338° to BFV VORTAC.

**WILL ROGERS TRANSITION (ROCKN3•IRW):** From over ROCKN track 028° to NUTTY, then track 079° to IRW VORTAC.