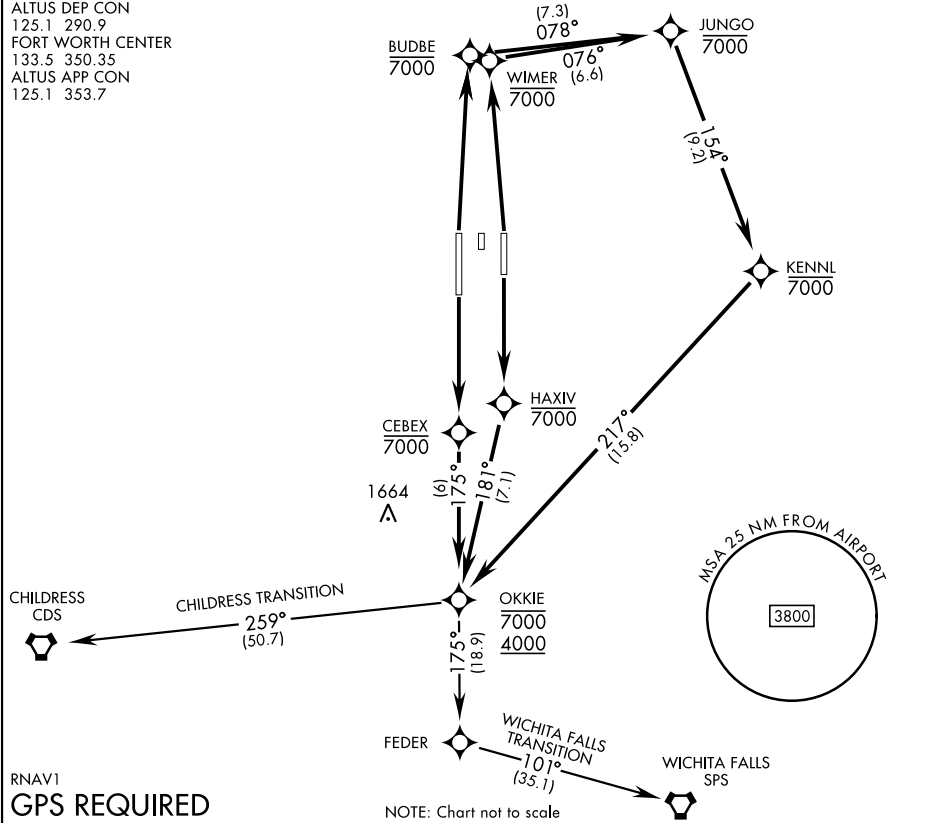


ATIS ★ 109.8 273.5	AL-482 [USAF]	Rwy	Knots	60	120	180	240	300	360
CLNC DEL		36L/R	V/V(fpm)	300	600	900	1200	1500	1800

Minimum Climb to 1900

TOP ALTITUDE:
9000

120.65 284.7
GND CON
121.85 275.8
ALTUS TOWER ★
119.65 254.4
ALTUS DEP CON
125.1 290.9
FORT WORTH CENTER
133.5 350.35
ALTUS APP CON
125.1 353.7



▼

DEPARTURE ROUTE DESCRIPTION

TAKEOFF RWY 18L: Climb direct HAXIV, then on track 181° to OKKIE. Cross OKKIE between 4000 and 7000, thence...

TAKEOFF RWY 18R: Climb direct CEBEX, then on track 175° to OKKIE. Cross OKKIE between 4000 and 7000, thence...

TAKEOFF RWY 36L: Climb direct BUDBE, then on depicted route to OKKIE. Cross OKKIE between 4000 and 7000, thence...

TAKEOFF RWY 36R: Climb direct WIMER, then on depicted route to OKKIE. Cross OKKIE between 4000 and 7000, thence...

...via transition or assigned route. Maintain 9000. Expect filed altitude 10 minutes after departure.

CHILDRESS TRANSITION (OKKIE3•CDS): From over OKKIE track 259° to CDS.

WICHITA FALLS TRANSITION (OKKIE3•SPS): From over OKKIE track 175° to FEDER, then track 101° to SPS.

SC-1, 07 AUG 2025 to 04 SEP 2025

SC-1, 07 AUG 2025 to 04 SEP 2025