

ALTUS, OKLAHOMA

ILS or RNAV (GPS) Y RWY 36L

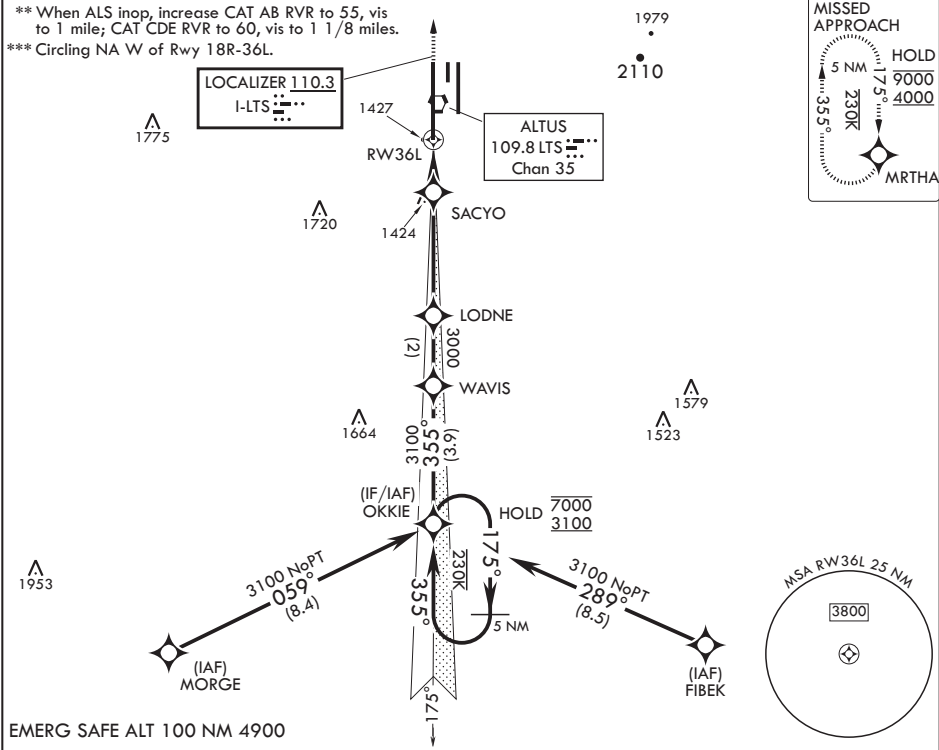
LOC I-LTS 110.3	APCH CRS 355°	Rwy Idg 13,440
	TDZE 1354	
	Arpt Elev 1382	

AL-482 (USAF)

ALTUS AFB (KLTS)

RNP APCH for LNAV	ALSF-1	MISSED APPROACH: Climb to 4000 direct MRTHA and hold.
RNAV1-GPS required for ILS.		
▼ * When ALS inop, increase CAT ABCDE RVR to 40, vis to 3/4 mile; RVR 18 authorized with use of FD or AP or HUD to DA.		

ATIS★ 109.8 273.5	FORT WORTH CENTER 133.5 350.35	APP CON 125.1 353.7	TOWER★ 119.65 254.4	GND CON 121.85 275.8	CLNC DEL 120.65 284.7
-----------------------------	--	-------------------------------	-------------------------------	--------------------------------	---------------------------------



EMERG SAFE ALT 100 NM 4900

					OKKIE 12		WAVIS		LODNE		SACYO		VORTAC		RW36L		ELEV 1382		TDZE 1354	
7000 3100		175° 355°		355° 3100		3000		1800		1 NM to RW 36L		3.5 NM		1.5 NM		36L				
GS 3.00° TCH 55																				
CATEGORY		A		B		C		D		E										
S-ILS 36L*		1554/24		200		(200-½)														
LNAV MDA**		1740/24	386 (400-½)	1740/35	386 (400-¾)															
CIRCLING***		1780-1 398 (400-1)	1840-1 458 (500-1)	1880-1½ 498 (500-1½)	2080-2¼ 698 (700-2¼)	2180-2¾ 798 (800-2¾)														

ALTUS, OKLAHOMA 34°40'N - 99°16'W

ALTUS AFB (KLTS)

Amdt 3 14JUL22

TERPS

ILS or RNAV (GPS) Y RWY 36L