
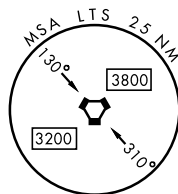
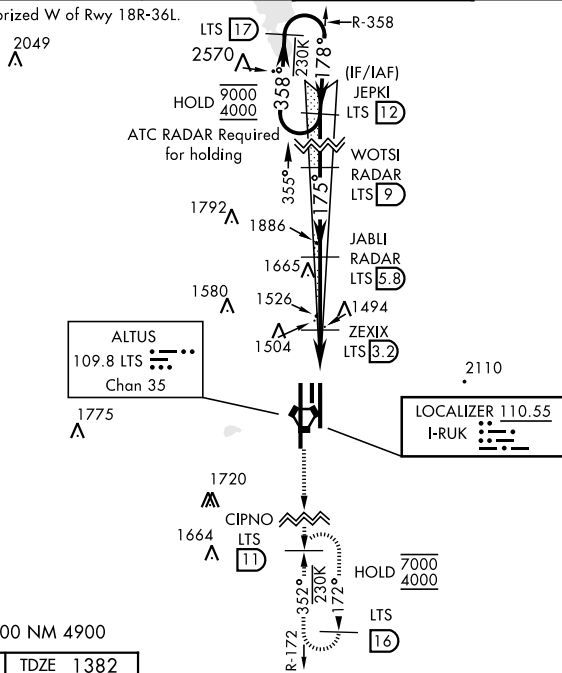


ALTUS, OKLAHOMA

ILS or LOC RWY 18L

LOC I-RUK 110.55		APCH CRS 175°		Rwy Idg TDZE Arprt Elev 9001 1382 1382	AL-482 [USAF]		ALTUS AFB (KLTS)		
DME or RADAR required.					SALSF 	MISSED APPROACH: Climb to 4000, intercept LTS VORTAC R-172 to CIPNO and hold.			
<div><div>▽</div><div>** When ALS inop, increase RVR to 55 and vis to 1 mile. ** When ALS inop, increase CAT AB RVR to 55, vis to 1 mile, CAT CDE vis to 1/8 miles.</div></div>									
ATIS ★ 109.8 273.5		FORT WORTH CENTER 133.5 350.35		APP CON 125.1 353.7		TOWER ★ 119.65 254.4		GND CON 121.85 275.8	CLNC DEL 120.65 284.7

***Circling not authorized W of Rwy 18R-36L.



EMERG SAFE ALT 100 NM 4900

ELEV 1382

TZDE 1382

FAF to MAP 4.1 NM

CATEGORY	A	B	C	D	E
S-ILS 18L	1582/40	200	(200-¾)		
S-LOC 18L *	1760/40	378	(400-¾)		
CIRCLING ***	1780-1 398 (400-1)	1840-1 458 (500-1)	1880-1½ 498 (500-1½)	2080-2¼ 698 (700-2¼)	2180-2¾ 798 (800-2¾)
WITHOUT LAST STEPDOWN FIX					
S-LOC 18L **	2040/40	658 (700-¾)	2040-1⅝	658	(700-1⅝)
CIRCLING ***	2040-1	658 (700-1)	2040-1⅞ 658 (700-1⅞)	2080-2¼ 698 (700-2¼)	2180-2¾ 798 (800-2¾)

ALTUS, OKLAHOMA
Amdt 5 20APR23

34° 40' N-99° 16' W

ALTUS AFB (KLTS)

ILS or LOC RWY 18L

SC-1, 07 AUG 2025 to 04 SEP 2025

SC-1, 07 AUG 2025 to 04 SEP 2025