

WAAS CH 42629 W13A	APP CRS 128°	Rwy Idg 5997 TDZE 178 Apt Elev 178
--	------------------------	---

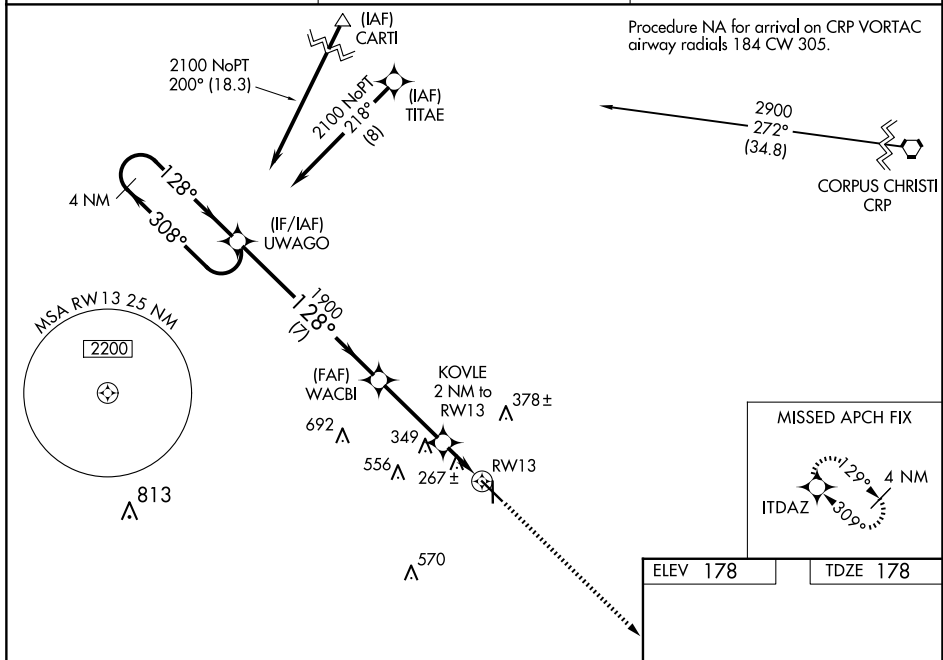
RNAV (GPS) RWY 13
ALICE INTL (ALI)

RNP APCH.

T Baro-VNAV NA when using Nueces County altimeter setting. For uncompensated Baro-VNAV systems, LNAV/VNAV NA below -3°C or above 42°C. When local altimeter setting not received, use Nueces County altimeter setting and increase all DA 56 feet and all MDA 60 feet, increase LPV and LNAV/VNAV visibility all Cats ¼ mile and LNAV Cat C and D ¼ mile. Rwy 13 helicopter visibility reduction below ¾ SM NA. VDP NA with Nueces County altimeter setting.

MISSED APPROACH: Climb to 2600 direct ITDAZ and hold.

ASOS 119,225	KINGSVILLE APP CON ★ 119,9 290,45	UNICOM 123,0 (CTAF) ①
------------------------	---	---------------------------------



4 NM Holding Pattern

UWAGO

WACBI

KOVLE
2 NM to RW13

RW13

2100

308°

128°

1900

860

7 NM

3.3 NM

1 NM

1 NM

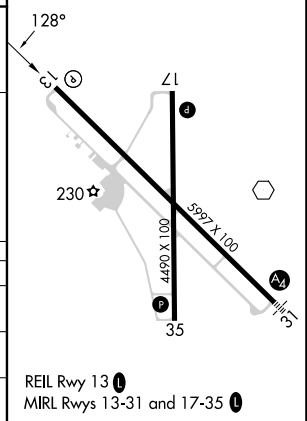
GP 3.00°
TCH 50

2600

ITDAZ

*RNAV only.

CATEGORY	A	B	C	D
LPV DA		428- $\frac{3}{4}$	250 (300- $\frac{3}{4}$)	
RNAV/ VNAV DA		428- $\frac{3}{4}$	250 (300- $\frac{3}{4}$)	
RNAV MDA	560-1	382 (400-1)	560-1 $\frac{1}{8}$	382 (400-1 $\frac{1}{8}$)



RNAV (GPS) RWY 13