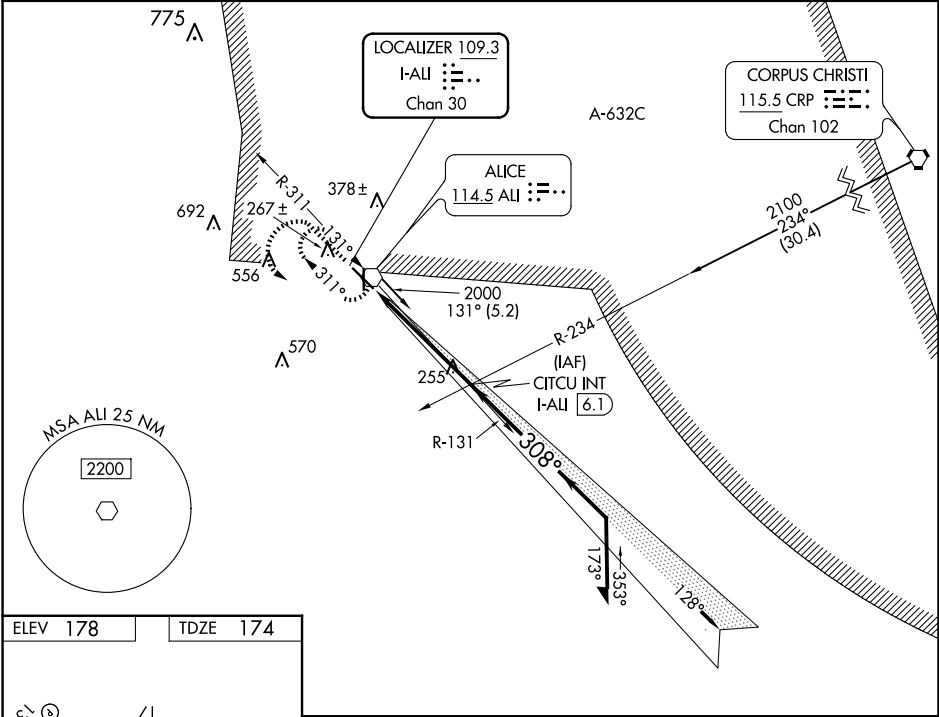


LOC/DME I-ALI <b>109.3</b> Chan <b>30</b>	APP CRS <b>308°</b>	Rwy Idg TDZE <b>174</b> Apt Elev <b>178</b>	<b>5997</b>
---	------------------------	---	-------------

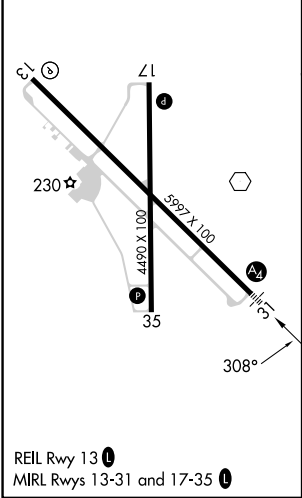
LOC/DME RWY 31  
ALICE INTL (ALI)

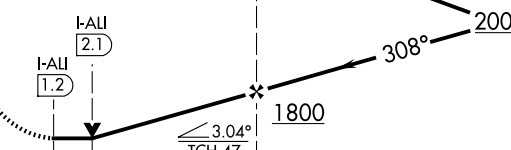
RADAR required for procedure entry from Corpus Christi CRP VORTAC.		MALS	MISSED APPROACH: Climb to 1500 then climbing left turn to 2000 on direct ALI VOR and hold.
▼ VDP NA when using Nueces County altimeter setting. When local altimeter setting not received, use Nueces County altimeter setting and increase all MDAs 60 feet and S-LOC 31 visibility Cat C/D ¼ SM, and Circling visibility Cat D ¼ SM. For inop ALS when using Nueces County altimeter setting, increase S-31 Cats C, D visibility to 1½ SM.		●	

ASOS <b>119.225</b>	KINGSVILLE APP CON ★ <b>119.9 290.45</b>	UNICOM <b>123.0 (CTAF) 0</b>
------------------------	---	---------------------------------



ELEV <b>178</b>	TDZE <b>174</b>
-----------------	-----------------



1500 ↑	2000 ↙	ALI ⬡	2000 CITCU INT I-ALI [6.1]	128°	Remain within 10 NM
VGSI and descent angles not coincident.					
					
CATEGORY	A	B	C	D	
S-31	520-¾ 346 (400-¾)				
CIRCLING	600-1 422 (500-1)	640-1 462 (500-1)	700-1½ 522 (600-1½)	900-2¼ 722 (800-2¼)	