

WAAS CH 99319 W04A	APP CRS 042°	Rwy Idg 5675 TDZE 4312 Apt Elev 4314
--	------------------------	---

RNAV (GPS) RWY 4

DEMING MUNI (DMN)

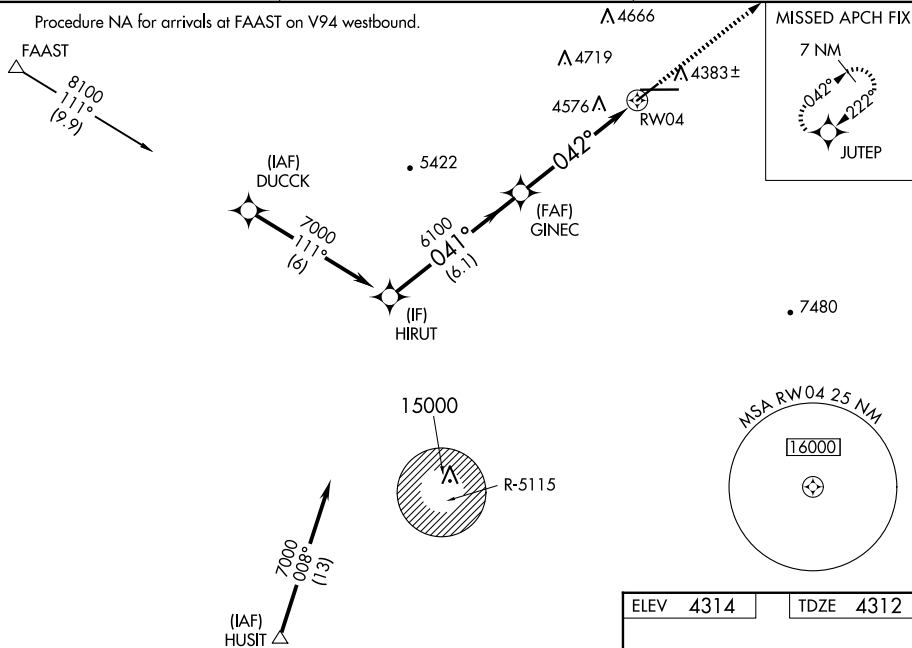
RNP APCH - GPS.

▼ For uncompensated Baro-VNAV systems, LNAV/VNAV NA below -23°C or above 40°C. VDP and Baro-VNAV NA when using Las Cruces altimeter setting. When local altimeter setting not received, use Las Cruces altimeter setting and increase all DA 114 feet and all MDA 120 feet; increase LPV and LNAV/VNAV all Cats visibility ½ mile, increase LNAV Cats C and D visibility ½ mile, increase Circling Cat B visibility ¼ mile and Cats C and D visibility ½ mile. Rwy 4 helicopter visibility reduction below ¾ SM NA. Circling Rwy 22, 26 NA at night.

MISSED APPROACH:
Climb to 7100 direct
JUTEP and hold.

ASOS 118.525	ALBUQUERQUE CENTER 128.2 285.5	UNICOM 122.8 (CTAF) 0
------------------------	--	---------------------------------

Procedure NA for arrivals at FFAST on V94 westbound.



Procedure Turn NA

HIRUT

7000

041°

GINEC

6100

042°

1.7 NM to RW04

RW04

GP 3.00° TCH 45


6.1 NM

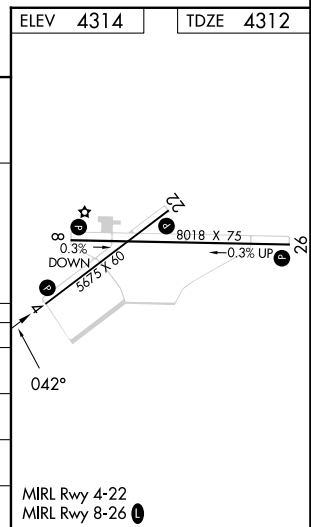
3.7 NM

1.7 NM

7100

JUTEP

CATEGORY		A	B	C	D
LPV	DA	4562-1 250 (300-1)			
RNAV/ VNAV	DA	4945-2¼ 633 (700-2¼)			
RNAV	MDA	4880-1 568 (600-1)		4880-1½ 568 (600-1½)	4880-1¾ 568 (600-1¾)
 CIRCLING		4880-1 566 (600-1)	4940-1 626 (700-1)	5020-2 706 (800-2)	5020-2¼ 706 (800-2¼)



RNAV (GPS) RWY 4