

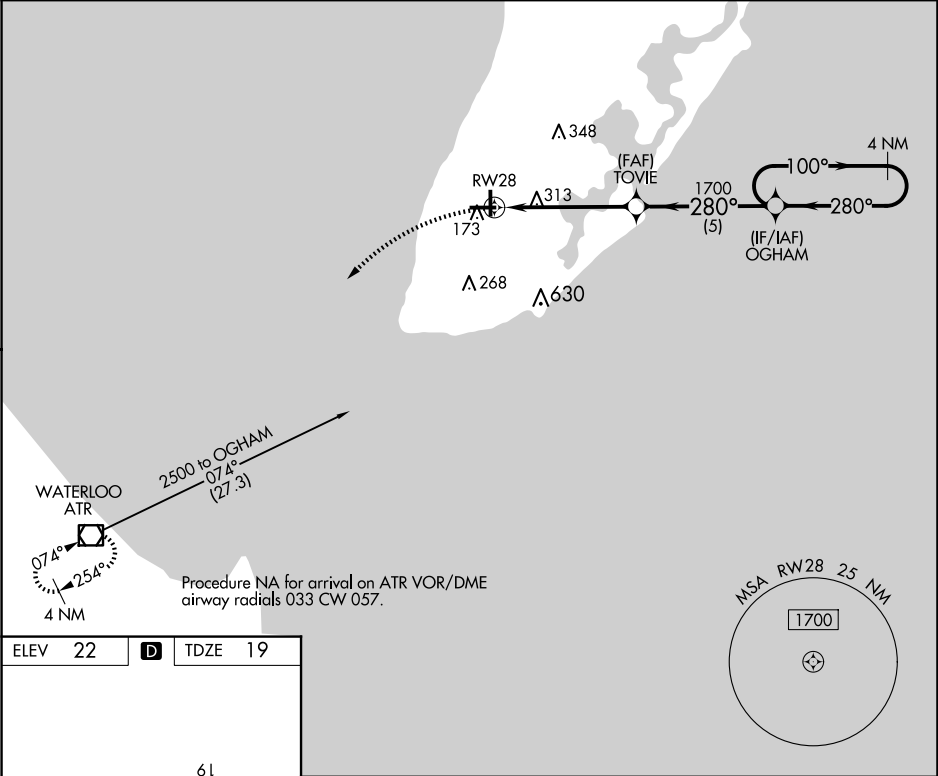
WAAS CH <b>86741</b> <b>W28A</b>	APP CRS <b>280°</b>	Rwy Idg <b>5000</b> TDZE <b>19</b> Apt Elev <b>22</b>
--	------------------------	---

RNAV (GPS) RWY 28

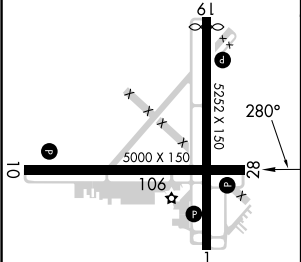
CAPE MAY COUNTY (WWD)

RNP APCH - GPS.	MISSED APPROACH: Climbing left turn to 2500 direct ATR VOR/DME and hold.
▼ For uncompensated Baro-VNAV systems, LNAV/VNAV NA below -15° C or above 54° C. Circling NA for Cats C and D northeast of Rwy 19 and 28. Rwy 28 helicopter visibility reduction below ¼ SM NA. Circling Rwy 1 NA at night.	

AWOS-3PT <b>118.275</b>	ATLANTIC CITY APP CON <b>124.6 327.125</b>	CLNC DEL <b>121.7</b>	UNICOM <b>122.7 (CTAF) 1</b>
----------------------------	---	--------------------------	---------------------------------



ELEV 22	<b>D</b>	TDZE 19
---------	----------	---------



MIRL Rwy 10-28 1  
HIRL Rwy 1-19 1

<div>2500 ATR</div> <div>OGHAM 4 NM Holding Pattern</div> <div>TOVIE 1700</div> <div>RW28 1.6 NM to RW28</div> <div>GP 3.00° TCH 57</div> <div>1.6 3.5 NM 5 NM</div>				
CATEGORY	A	B	C	D
LPV DA	665-2½		646 (700-2½)	
LNAV/VNAV DA	634-2½		615 (700-2½)	
LNAV MDA	580-1	561 (600-1)	580-1⅝	561 (600-1⅝)
<b>CIRCLING</b>	580-1 558 (600-1)	620-1 598 (600-1)	620-1⅝ 598 (600-1⅝)	980-3 958 (1000-3)