

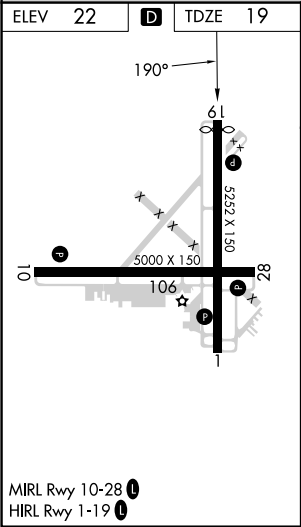
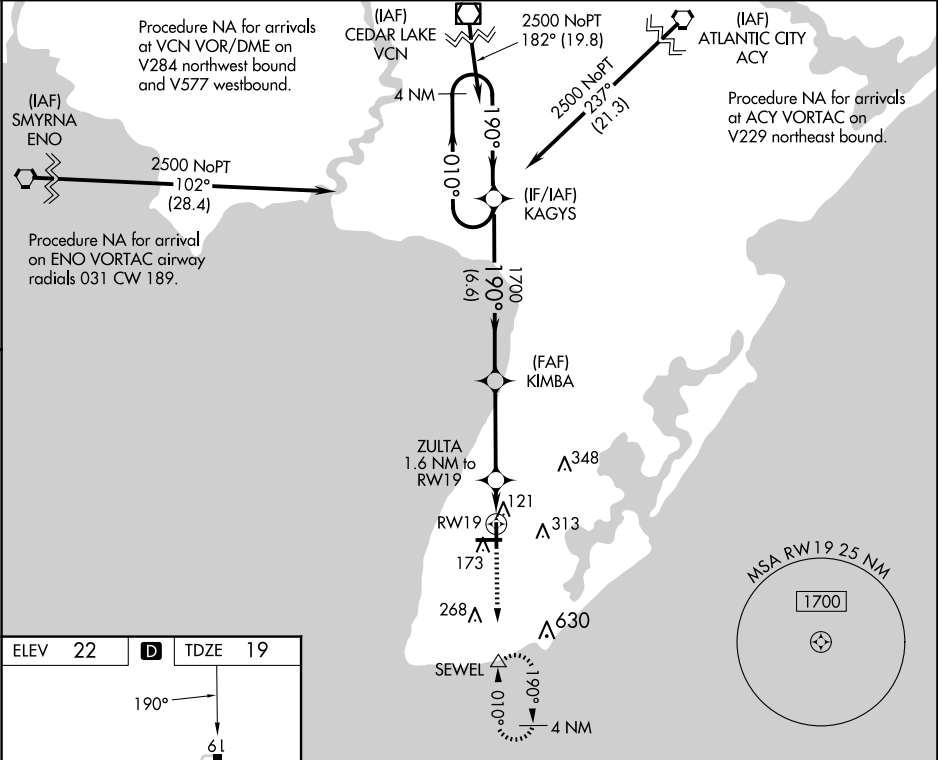
WAAS CH <b>82400</b> <b>W19A</b>	APP CRS <b>190°</b>	Rwy Idg <b>5036</b> TDZE <b>19</b> Apt Elev <b>22</b>
--	------------------------	---

RNAV (GPS) RWY 19

CAPE MAY COUNTY (WWD)

RNP APCH.	MISSED APPROACH: Climb to 2500 direct SEWEL and hold, continue climb-in-hold to 2500.
For uncompensated Baro-VNAV systems, LNAV/VNAV NA below -8°C or above 54°C. Circling NA for Cats C and D NE of Rwy 19 and 28. Rwy 19 helicopter visibility reduction below 1 SM NA. Circling Rwy 1 NA at night.	

AWOS-3PT <b>118.275</b>	ATLANTIC CITY APP CON <b>124.6 327.125</b>	CLNC DEL <b>121.7</b>	UNICOM <b>122.7 (CTAF) 0</b>
----------------------------	---	--------------------------	---------------------------------



2500 ↑ *LNAV only.	SEWEL △	<p>4 NM Holding Pattern</p> <p>KAGYS</p> <p>010° → 2500</p> <p>← 190°</p> <p>ZULTA 1.6 NM to RW19</p> <p>KIMBA 1700</p> <p>190°</p> <p>1700</p> <p>*560</p> <p>RW19</p> <p>1.6 3.6 NM 6.6 NM</p> <p>GP 3.00° TCH 40</p>			
CATEGORY		A	B	C	D
LPV DA		269-1 250 (300-1)			
LNAV/VNAV DA		392-1¼ 373 (400-1¼)			
LNAV MDA		380-1 361 (400-1)			
CIRCLING		480-1 458 (500-1)	620-1 598 (600-1)	620-1½ 598 (600-1½)	980-3 958 (1000-3)