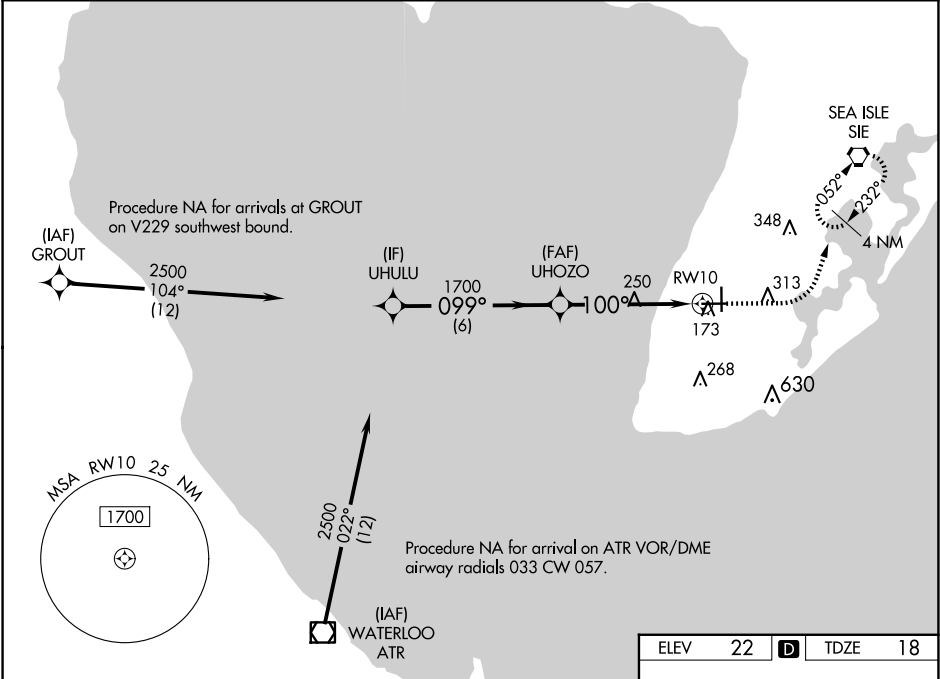


WAAS CH 93541 W10A	APP CRS 100°	Rwy Idg TDZE Apt Elev	5000 18 22
--	------------------------	-----------------------------	---------------------------------------

RNAV (GPS) RWY 10

CAPE MAY COUNTY (WWD)

RNP APCH. ▼ For uncompensated Baro-VNAV systems, LNAV/VNAV NA below -15° C or above 54° C. Circling NA for Cats C and D northeast of Rwy 19 and 28. Rwy 10 helicopter visibility reduction below ¾ SM NA. Circling Rwy 1 NA at night. ▲		MISSED APPROACH: Climb to 500 then climbing left turn to 2000 direct SIE VORTAC and hold.	
AWOS-3PT 118.275	ATLANTIC CITY APP CON 124.6 327.125	CLNC DEL 121.7	UNICOM 122.7 (CTAF) 0



VGSI and RNAV glidepath not coincident (VGSI Angle 3.00/TCH 45).		500	2000	SIE
UHULU		2500	1700	100°
GP 3.00° TCH 56		6 NM	3.7 NM	1.4 NM
CATEGORY	A	B	C	D
LPV DA	285-7/8		267 (300-7/8)	
LNAV/VNAV DA	336-1		318 (400-1)	
LNAV MDA	500-1		500-13/8	
500-1	478 (500-1)	620-1	598 (600-1)	620-11/2
598 (600-1)	980-3	958 (1000-3)	HIRL Rwy 1-19 0	
CIRCLING		MIRL Rwy 10-28 0		