

WAAS CH 40303 W21A	APP CRS 211°	Rwy Idg TDZE 404 Apt Elev 410
----------------------------------------	------------------------	---------------------------------------------------

RNAV (GPS) Y RWY 21R

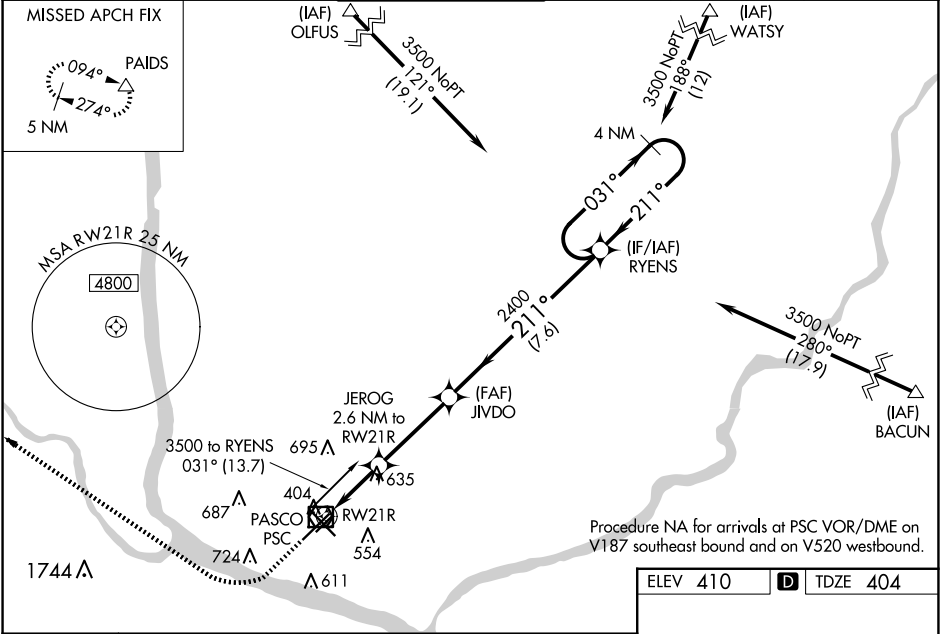
TRI-CITIES (PSC)

Baro-VNAV NA when using Hermiston altimeter setting. For uncompensated Baro-VNAV systems, LNAV/VNAV NA below -14°C (7°F) or above 54°C (130°F). DME/DME RNP-0.3 NA. VDP NA with Hermiston altimeter setting. When local altimeter setting not received, use Hermiston altimeter setting and increase all DA 95 feet and all MDA 100 feet; increase LNAV/VNAV all Cats visibility 3⁄8 mile; LNAV Cat C and D visibility 3⁄8 mile and Circling Cat C and D visibility 1⁄4 mile.
RVR 1800 authorized with use of FD or AP or HUD to DA, NA when using Hermiston altimeter setting.

MALSR

MISSED APPROACH:
Climb to 1100 then climbing right turn to 5200 direct PAIDS and hold, continue climb-in-hold to 5200.

ATIS 125.65	SPOKANE APP CON ★ 128.75 377.2	TRI-CITIES TOWER ★ 135.3 (CTAF) 0 323.3	GND CON 121.8	CLNC DEL 120.0	UNICOM 122.95
-----------------------	------------------------------------------	---------------------------------------------------	-------------------------	--------------------------	-------------------------



1100 5200 PAIDS		*LNAV only	
RW21R		RW21R	
1.5 NM		1.1 NM	
A		B	
LPV DA#		604/24 200 (200-1⁄2)	
LNAV/VNAV DA		844/51 440 (500-1)	
LNAV MDA		940/24 536 (600-1⁄2)	
CIRCLING		1040-1 530 (600-1)	

ELEV 410 TDZE 404

REIL Rwy 3L and 12
MIRL Rwy 12-30
HIRL Rwy 3L-21R