

APP CRS 301°	Rwy Idg 7504 TDZE 405 Apt Elev 410
------------------------	---

RNAV (RNP) Z RWY 30
TRI-CITIES (PSC)

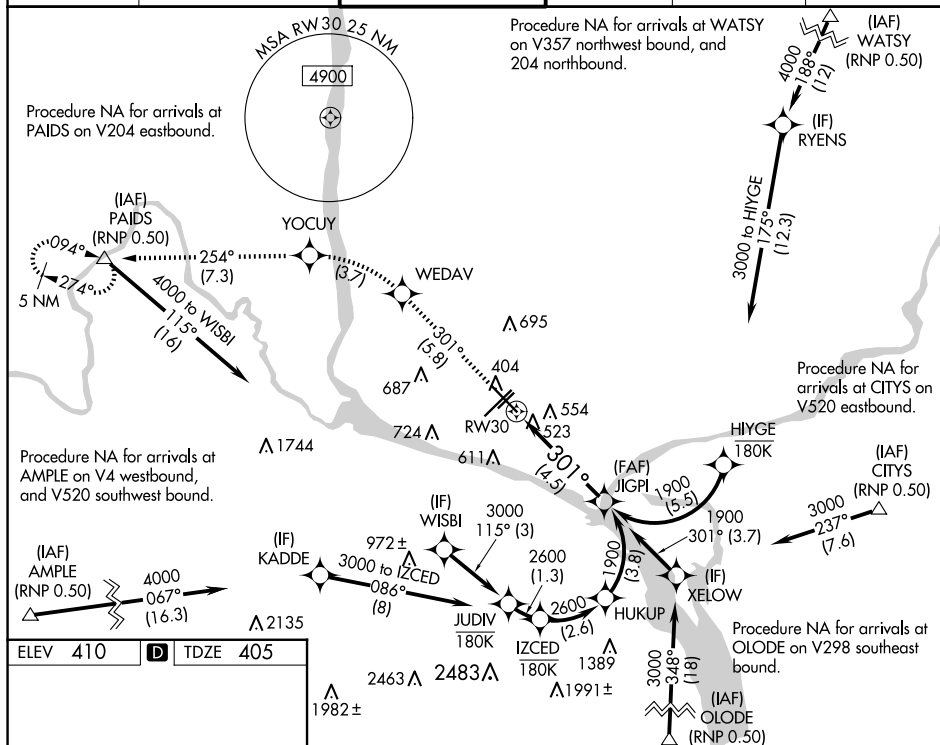
T For uncompensated Baro-VNAV systems, procedure NA below -14°C (7°F) or above 54°C (130°F). RF required. GPS required. For inoperative ODALS, increase RNP 0.11 visibility all Cats to 1½ mile, and increase RNP 0.30 visibility all Cats to 1¾ mile.

ODALS



MISSED APPROACH: Climb to 5200 on track 301° to WEDAV, left turn to YOCUY, and on track 254° to PAIDS and hold.

ATIS 125.65	SPOKANE APP CON ★ 128.75 377.2	TRI-CITIES TOWER★ 135.3 (CTAF) 0 323.3	GND CON 121.8	CLNC DEL 120.0	UNICOM 122.95
-----------------------	--	--	-------------------------	--------------------------	-------------------------



See planview for multiple IF locations.

CATEGORY	A	B	C	D
RNP 0.11 DA	778-1 $\frac{1}{8}$ 373 (400-1 $\frac{1}{8}$)			
RNP 0.30 DA	834-1 $\frac{1}{4}$ 429 (500-1 $\frac{1}{4}$)			

AUTHORIZATION REQUIRED

RNAV (RNP) Z RWY 30

NW-1, 07 AUG 2025 to 04 SEP 2025