

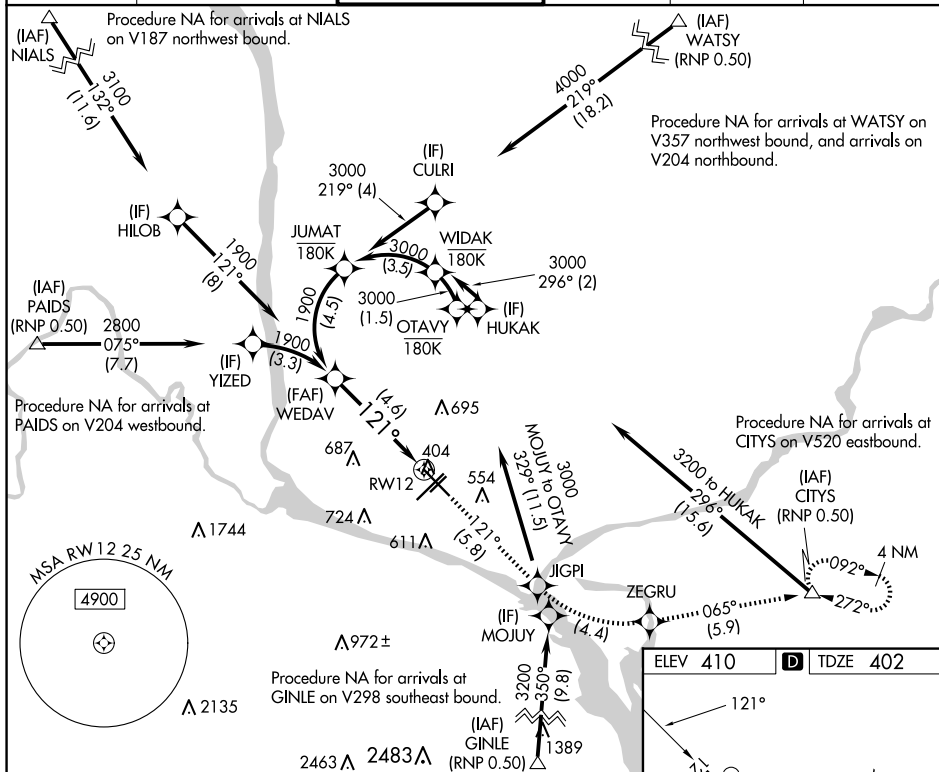
APP CRS	Rwy Idg	7504
121°	TDZE	402
	Apt Elev	410

RNAV (RNP) Z RWY 12
TRI-CITIES (PSC)

T For uncompensated Baro-VNAV systems, procedure NA below -14°C (7°F) or above 54°C (130°F).
GPS required. RF required.

MISSED APPROACH: Climb to 3200 on track 121° to JIGPI, left turn to ZEGRU, and on track 065° to CITYS and hold.

ATIS 125.65	SPOKANE APP CON ★ 128.75 377.2	TRI-CITIES TOWER ★ 135.3 (CTAF) 0 323.3	GND CON 121.8	CLNC DEL 120.0	UNICOM 122.95
----------------	-----------------------------------	--	------------------	-------------------	------------------



The diagram illustrates the location of WEDAV at 1900. A bearing of 121° and a distance of 4.6 NM are indicated from the station to a point near RW12. A planview inset shows the locations of WEDAV, JIGPI, ZEGRU, and CITYS.

CATEGORY	A	B	C	D
RNP 0.11 DA		769-1¼	367 (400-1¼)	
RNP 0.30 DA		883-1⅝	481 (500-1⅝)	

AUTHORIZATION REQUIRED

