
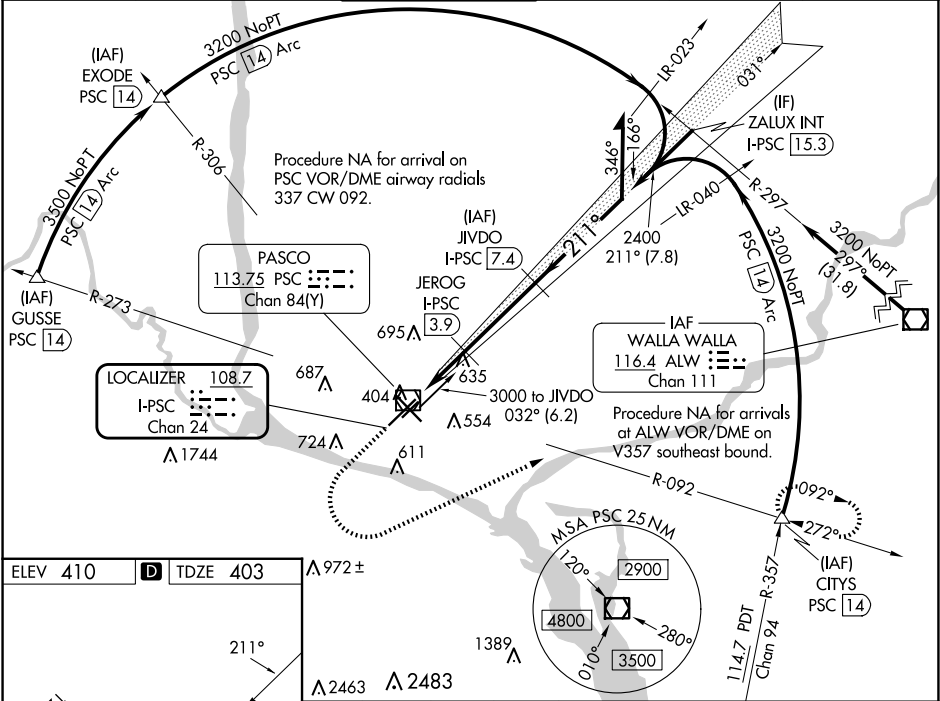


LOC/DME I-PSC	APP CRS	Rwy Idg	7110
108.7	211°	TDZE	403
Chan 24		Apt Elev	410

ILS or LOC RWY 21R

TRI-CITIES (PSC)

DME required for LOC only. DME required for procedure entry at GUSSE, EXODE, CITYS, PSC VOR/DME.				<div>MALSR</div> <div></div>	MISSED APPROACH: Climb to 1200 then climbing left turn to 3200 on heading 050° and PSC VOR/DME R-092 to CITYS INT/PSC VOR/DME 14 DME and hold.	
▼ VDP NA when using Hermiston altimeter setting. For inop ALS when using Hermiston altimeter setting, increase S-ILS 21R all Cats visibility to RVR 4500, increase S-LOC 21R Cats C and D visibility to 1¾ SM. When local altimeter setting not received, use Hermiston altimeter setting: increase DA to 698 feet and all MDAs 100 feet; increase S-LOC 21R Cat C and D visibility ¾ SM and Circling Cat C and D visibility ¼ SM. *RVR 1800 authorized with use of FD or AP or HUD to DA (NA when using Hermiston altimeter setting).						
ATIS 125.65	SPOKANE APP CON ★ 128.75 377.2	TRI-CITIES TOWER ★ 135.3 (CTAF) 0 323.3	GND CON 121.8	CLNC DEL 120.0	UNICOM 122.95	



1200 3200 PSC R-092 CITYS

Use I-PSC DME when on the localizer course.

JEROG I-PSC 3.9 JIVDO I-PSC 7.4

2400 2400

031° 2900

211°

GS 3.00° TCH 55

1.5 NM 1.1 NM 3.5 NM

Remain within 10 NM

REIL Rwy 3L and 12
 MIRL Rwy 12-30
 HIRL Rwy 3L-21R

CATEGORY	A	B	C	D
S-ILS 21R*	603/24 200 (200-½)			
S-LOC 21R	940/24 537 (600-½)		940/55 537 (600-1)	
C CIRCLING	940-1 530 (600-1)		1040-1¾ 630 (700-1¾)	1100-2¼ 690 (700-2¼)