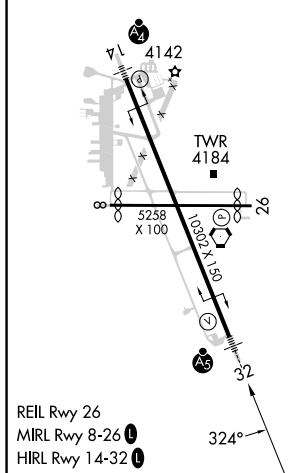
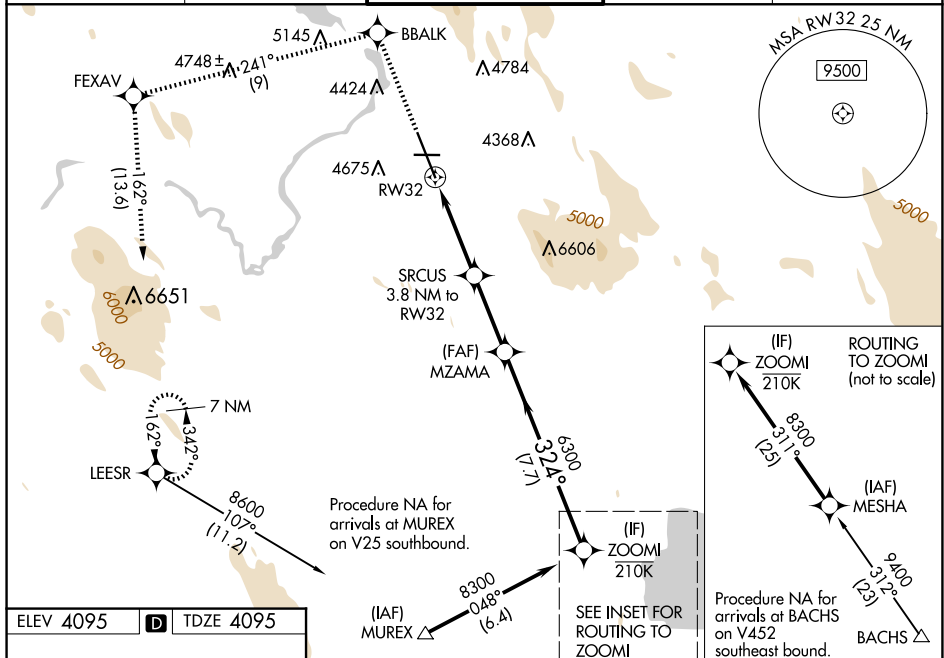


WAAS CH 70702 W32A	APP CRS 324°	Rwy Idg 10302 TDZE 4095 Apt Elev 4095
--	------------------------	--

RNAV (GPS) RWY 32
CRATER LAKE/KLAMATH RGNL (LMT)

RNP APCH - GPS.				<div><div><div>V</div><div>A</div></div><div>Baro-VNAV NA. Circling NA for Cat D northeast of Rwy 14-32. For inop ALS, increase LPV all Cats visibility to 1% SM, LPV* (CG 235) all Cats visibility to RVR 4500, LNAV/VNAV all Cats visibility to 1% SM, and LNAV Cat C/D visibility to 2½ SM.</div></div>		<div><div><div>MALSR</div><div><div><div>AS</div><div><div><div></div><div></div><div></div></div></div></div></div></div></div>		<div>MISSED APPROACH: Climb to 8600 direct BBALK and on track 241° to FEXAV and on track 162° to LEESR and hold. *Missed approach requires minimum climb of 235 feet per NM to 6100.</div>	
ATIS 126.5 263.0		KINGSLEY APP CON* 123.675 270.8		KINGSLEY TOWER* 133.975 (CTAF) 0 257.8		GND CON 121.9 348.6		UNICOM 122.95	



		tr 241°		tr 162°		MZAMA	ZOOMI
CATEGORY		A		B		C	D
LPV	DA*	4387/24		292 (300-½)			
LPV	DA	4644/60		549 (600-1¼)			
LNAV/ VNAV	DA	4705-1⅜		610 (700-1⅝)			
LNAV	MDA	4900/24 805 (900-½)	4900/40 805 (900-¾)	4900-1⅞		805 (900-1⅞)	
CIRCLING		4900-1 805 (900-1)	4980-1¼ 885 (900-1¼)	5420-3 1325 (1400-3)		5680-3 1585 (1600-3)	