

| | | | |
|-----------|---------|----------|-------|
| LOC I-LMT | APP CRS | Rwy Idg | 10302 |
| 109.5 | 324° | TDZE | 4095 |
| | | Apt Elev | 4095 |

ILS Y or LOC Y RWY 32

CRATER LAKE/KLAMATH RGNL (LMT)

DME required.

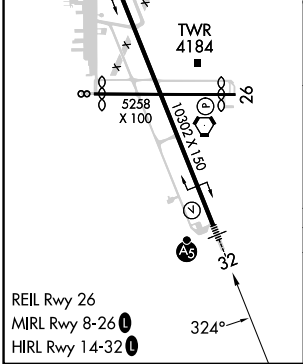
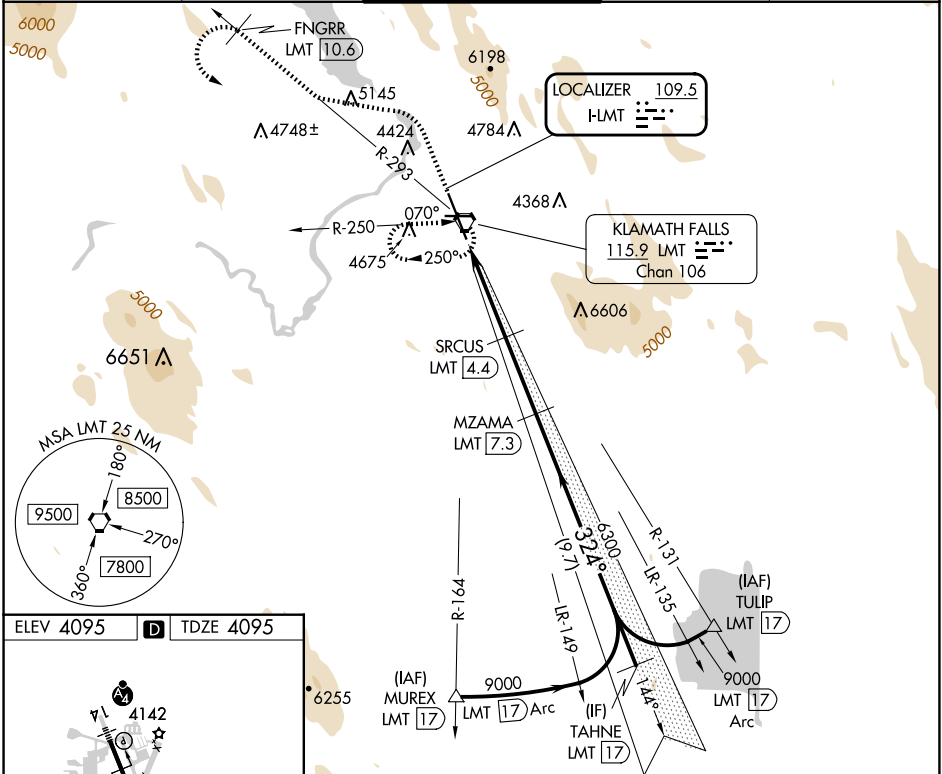
▼

Circling NA for Cat D northeast of Rwy 14-32. When local altimeter setting not received, procedure NA. DME from LMT VORTAC. Simultaneous reception of I-LMT and LMT DME required. For inop ALS, increase LOC Cts C/D visibility to 1 3/4 SM.

MALSR

MISSED APPROACH: Climb to 4700 then climbing left turn to 10000 on heading 266° and on LMT VORTAC R-293 to FNGRR/LMT 10.6 DME then left turn direct LMT VORTAC and hold, continue climb-in-hold to 10000.

| | | | | |
|-------------|-------------------|------------------------|-------------|--------|
| ATIS | KINGSLEY APP CON* | KINGSLEY TOWER* | GND CON | UNICOM |
| 126.5 263.0 | 123.675 270.8 | 133.975 (CTAF) 0 257.8 | 121.9 348.6 | 122.95 |



| | | | | | |
|----------|-----------------------|-----------------|---------------|-----------------|--------------|
| 4700 | 10000 | FNGRR LMT 10.6 | LMT | MZAMA LMT 7.3 | TAHNE LMT 17 |
| hdg 266° | LMT R-293 | LMT 10.6 | LMT 4.4 | 6300 | 9000 |
| LMT 0.6 | LMT 2.4 | SRCUS LMT 4.4 | 5360 | 6300 | 9000 |
| -1.8 NM | 2 NM | 3 NM | 9.7 NM | GS 3.00° | TCH 55' |
| CATEGORY | A | B | C | D | |
| S-ILS 32 | 4315/24 220 (300-1/2) | | | | |
| S-LOC 32 | 4720/24 | 625 (700-1/2) | 4720-1 3/8 | 625 (700-1 1/8) | |
| CIRCLING | 4840-1 | 4980-1 1/4 | 5420-3 | 5680-3 | |
| | 745 (800-1) | 885 (900-1 1/4) | 1325 (1400-3) | 1585 (1600-3) | |