

VORTAC LMT
115.9
Chan **106**

APCH CRS
328°

Rwy Idg **10,302**
TDZE
4095
Arpt Elev **4095**

[USAF]

CRATER LAKE/KLAMATH RGNL (KLMT)

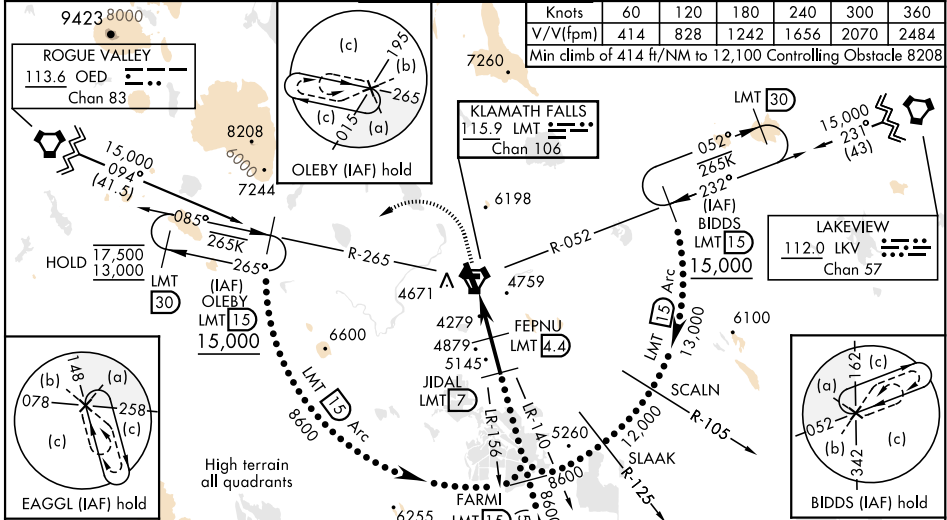
DME required

▼ *When ALS inop, increase vis 1 1/2 miles.
** Circling not authorized for CAT DE E of Rwy 14-32.

MALSR
A5

MISSED APPROACH: Climb to 5500 then climbing left turn to 13,000 on heading 230° and LMT VORTAC R-265 to OLEBY/LMT 15 DME and hold. Continue climb in hold to 13,000.

ATIS 126.5 263.0	KINGSLEY APP CON 123.675 270.8	KINGSLEY TOWER ★ 133.975 (CTAF) 0 257.8	GND CON 121.9 348.6	UNICOM 122.95
----------------------------	--	---	-------------------------------	-------------------------



NOT FOR CIVIL USE
EMERG SAFE ALT 100 NM 16,400

ELEV **4095** **D** TDZE **4095**
Rwy 8 Idg 4952'
Rwy 26 Idg 4746'

REIL Rwy 26
HIRL Rwy 14-32
MIRL Rwy 8-26

A5

5500 13,000 OLEBY LMT 15
hdg 230°

VGSI and descent angles not coincident. (VGSI Angle 3.00/TCH 50).
Procedure turn NA

FARML LMT 15 8600

LMT VORTAC

HEGEX LMT 1.9

FEPNU LMT 4.4

JIDAL LMT 7

5520

6300

3.41° TCH 50

0.4 NM 3.4 NM 2.6 NM

CATEGORY	C	D	E
S-32*	4540/45	445	(500-7%)
C CIRCLING**	5420-3 1325 (1400-3)	5660-3 1565 (1600-3)	5700-3 1605 (1700-3)

NW-1, 07 AUG 2025 to 04 SEP 2025

NW-1, 07 AUG 2025 to 04 SEP 2025