



KLAMATH FALLS, OREGON

25051

# HI-ILS Z or LOC Z RWY 32

LOC I-LMT	APCH CRS	Rwy ldg
<b>109.5</b>	<b>324°</b>	<b>10,302</b>
		TDZE
		<b>4095</b>
		Arpt Elev
		<b>4095</b>

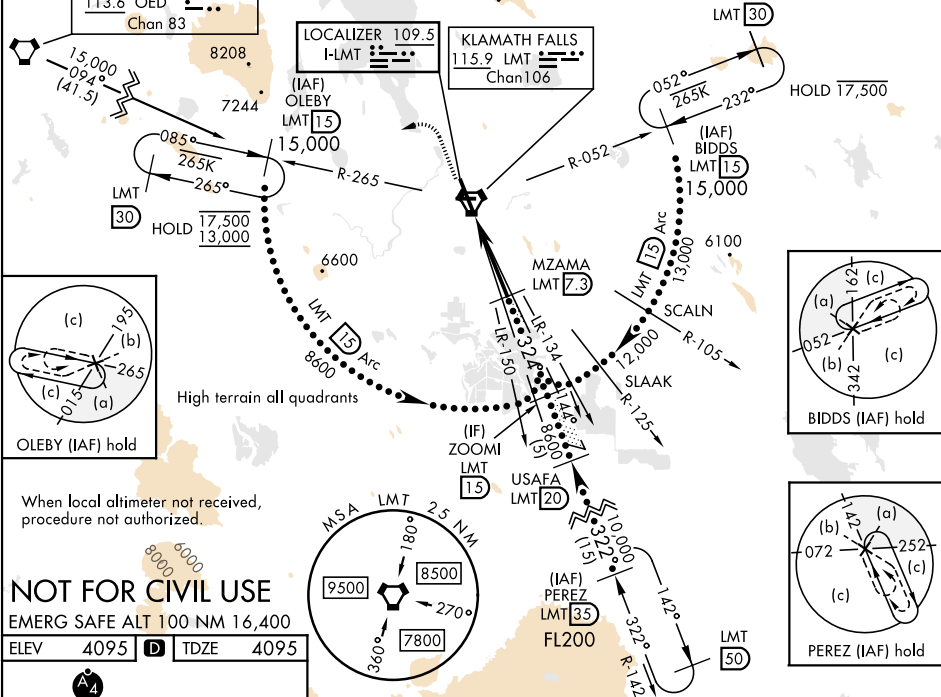
[USAF]

CRATER LAKE/KLAMATH RGNL (KLMT)

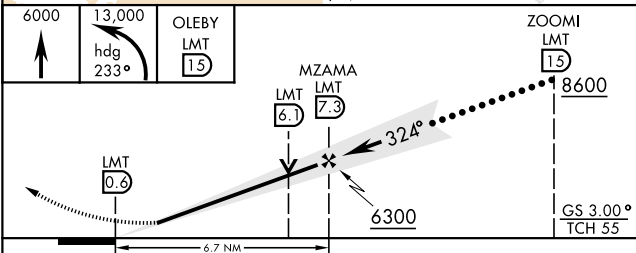
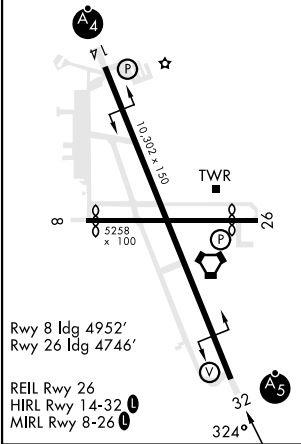
DME required	MALSR	MISSED APPROACH: Climb to 6000 then climbing left turn to 13,000 on hdg 233° and on LMT VORTAC R-265 to OLEBY/LMT 15 DME and hold. Cont climb-in-hold to 13,000.
<b>V</b> * When ALS inop, increase RVR to 45 vis to 7/8 mile. ** Circling not authorized for CAT DE NE of Rwy 14-32.	<b>A-5</b>	

ATIS	KINGSLEY APP CON	KINGSLEY TOWER ★	GND CON	UNICOM
<b>126.5 263.0</b>	<b>123.675 270.8</b>	<b>133.975 (CTAF) 0 257.8</b>	<b>121.9 348.6</b>	<b>122.95</b>

9423	Simultaneous reception of I-LMT and LMT DME required.	Knots	60	120	180	240	300	360
		V/V(fpm)	413	826	1239	1652	2065	2478
		Min climb of 413 ft/NM to 12,200 - Controlling Obstacle 8208'						



**NOT FOR CIVIL USE**  
EMERG SAFE ALT 100 NM 16,400  
ELEV 4095 D TDZE 4095



CATEGORY	C	D	E
S-ILS 32*	4369/24	274 (300-1/2)	
S-LOC 32	5940-3	1845 (1900-3)	
<b>C</b> CIRCLING **	5940-3	1845 (1900-3)	

KLAMATH FALLS, OREGON

42° 09'N-121° 44'W

CRATER LAKE/KLAMATH RGNL (KLMT)

Amtd 8 23JAN25

# HI-ILS Z or LOC Z RWY 32



NW-1, 07 AUG 2025 to 04 SEP 2025

NW-1, 07 AUG 2025 to 04 SEP 2025