

VOR/DME RWY 30

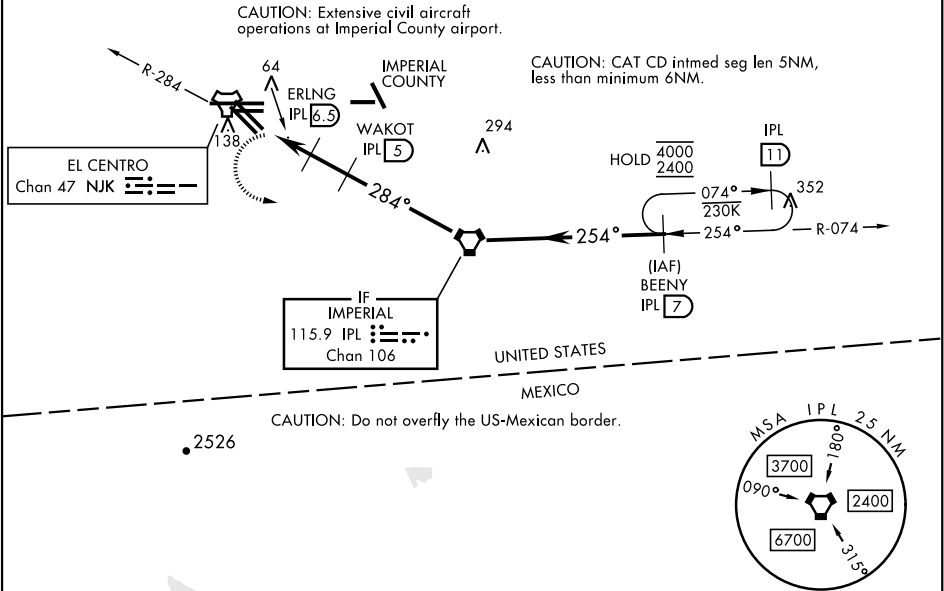
VORTAC IPL <b>115.9</b> Chan <b>106</b>	APCH CRS <b>284°</b>	Rwy Idg TDZE Arpt Elev <b>6825</b> <b>-42</b>
---	-------------------------	--

[USN]

EL CENTRO NAF (VRACIU FLD) (KNJK)

▼ Visibility reduction by helicopters NA. Procedure NA at night.		MISSED APPROACH: Climb to 600, then climbing left turn to 2400, intercept IPL VORTAC R-074 to BEENY and hold.		
ATIS ★ <b>269.275</b>	APP CON/DEP CON <b>128.55 292.2</b>	TOWER ★ <b>119.1 360.2</b>	GND CON <b>121.9 254.35</b>	CLNC DEL <b>340.2</b>

Rwy 30: 20:1 visual area penetrated by Fence, lit, 289 ft from thld, 213 ft right of course, 8 AGL/-34 MSL  
Fence, 199 ft from thld, 305 ft right of course, 8 AGL/-34 MSL  
Fence, 504 ft from thld, 3 ft right of course, 8 AGL/-34 MSL



EMERG SAFE ALT 100 NM 17,000 from NJK TACAN					ELEV -42		TDZE -42	
600 ↑		2400 ↖		IPL R-074	BEENY IPL 7			
ZALIG IPL 8		ERLNG IPL 6.5		WAKOT IPL 5		VORTAC		
0.5		1.5 NM		1.5 NM		2400		
2.94°		TCH 50		284°		254°		
CATEGORY		A		B		C		D
S-30		380-1 422 (500-1)		380-1½ 422 (500-1½)		480-1½ 522 (600-1½)		520-2 562 (600-2)
CIRCLING		480-1 522 (600-1)		480-1½ 522 (600-1½)		520-2 562 (600-2)		
HIRL Rwy 8-26, 12-30								