

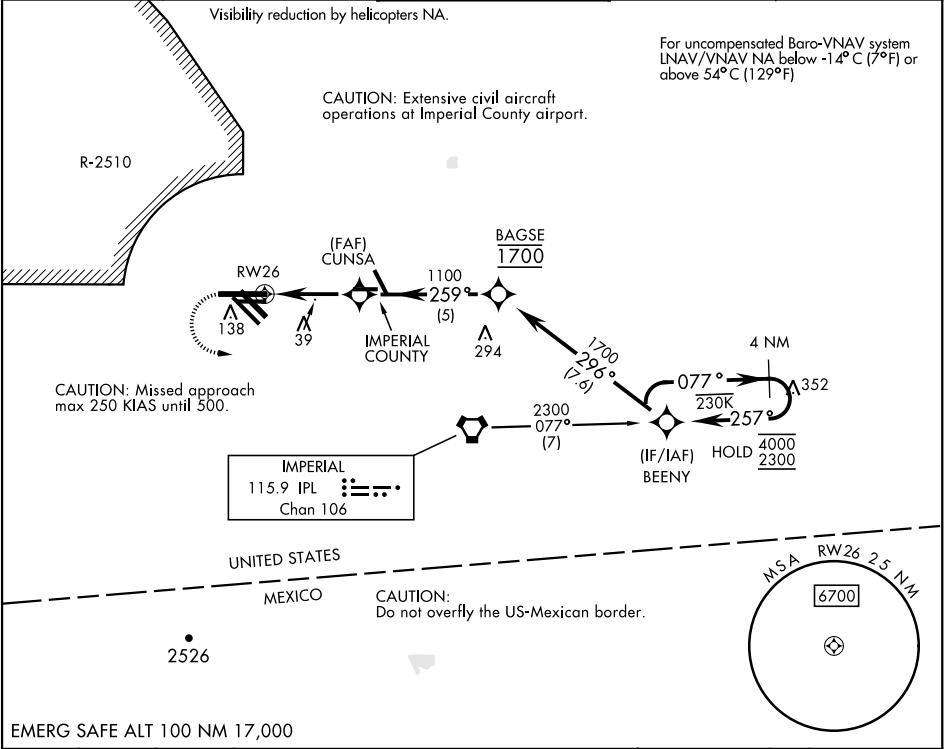
RNAV (GPS) RWY 26






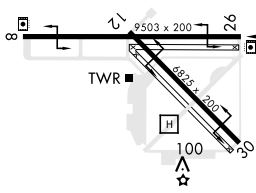

WAAS CH <b>95990</b> <b>W26A</b>	APCH CRS <b>259°</b>	Rwy Idg TDZE Arpt Elev <b>9503</b> <b>-46</b> <b>-42</b>
--	-------------------------	---

[USN]

EL CENTRO NAF (VRACIU FLD) (KNJK)

RNP APCH	MISSED APPROACH: Climb to 500, then climbing left turn to 2300 direct BEENY and hold.			
ATIS ★ <b>269.275</b>	APP CON/DEP CON <b>128.55 292.2</b>	TOWER ★ <b>119.1 360.2</b>	GND CON <b>121.9 254.35</b>	CLNC DEL <b>340.2</b>



<div><div>500 ↑</div><div>2300 </div><div></div></div>		<div><div>BEENY</div><div>4 NM Holding Pattern</div><div><div>077° → 4000</div><div>← 257° 2300</div></div></div>		<div>ELEV -42</div>	<div>TDZE -46</div>
<div><div></div><div>0.9 NM to RW26</div><div></div><div></div><div>3.4 NM</div></div>		<div><div>BAGSE</div><div>259°</div><div>1700</div></div>	<div><div>BEENY</div><div>296°</div><div>1100</div></div>	<div>GP 3.00°</div> <div>TCH 55</div>	<div></div>
CATEGORY	A	B	C	D	
LPV DA	206-¾	252	(300-¾)		
LNAV/VNAV DA	204-¾	250	(300-¾)	214-¾ 260 (300-¾)	
LNAV MDA	300-1	346	(400-1)		
 CIRCLING	480-1 522 (600-1)	480-1½ 522 (600-1½)	520-2 562 (600-2)		
HIRL Rwy 8-26, 12-30					

RNAV (GPS) RWY 26

SW-3, 07 AUG 2025 to 04 SEP 2025

SW-3, 07 AUG 2025 to 04 SEP 2025