
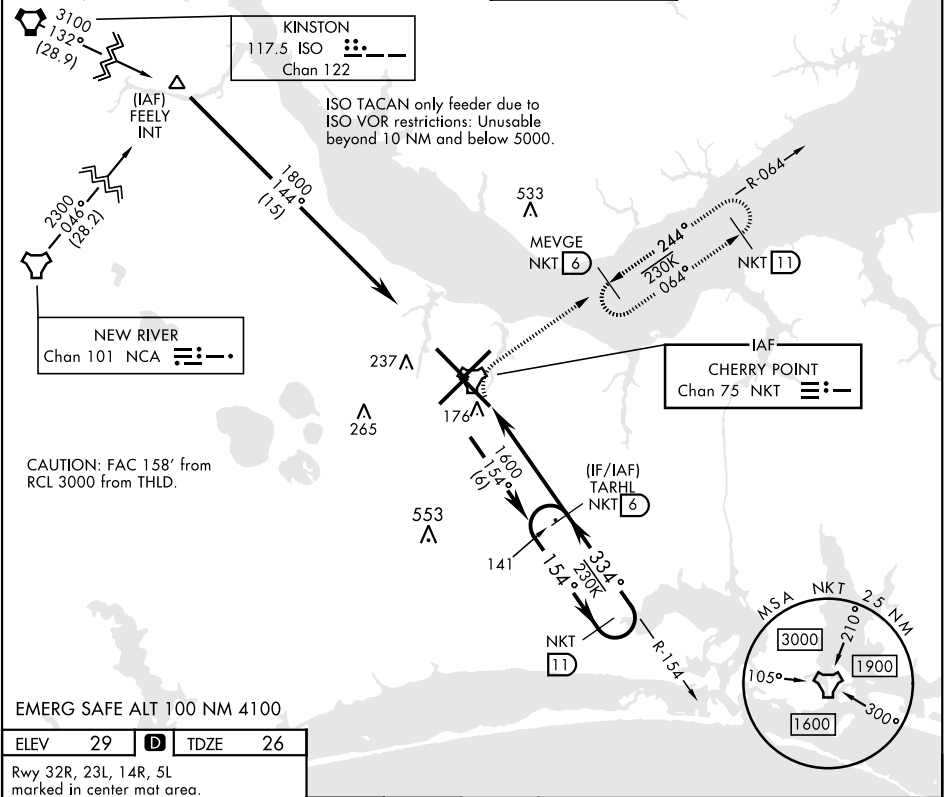
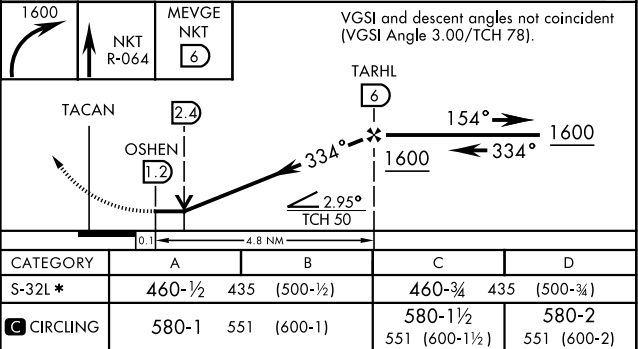
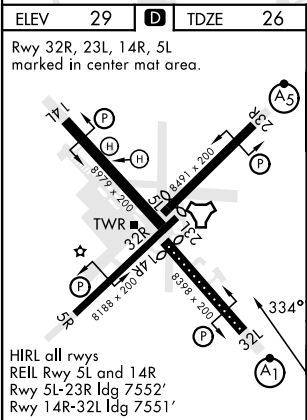


TACAN Z RWY 32L

TACAN NKT Chan 75		APCH CRS 334°		Rwy Idg 7551 TDZE 26 Arpt Elev 29		[USN]	CHERRY POINT MCAS (CUNNINGHAM FLD) (KNKT)						
* When ALS inop, increase vis CAT AB to 1 mile, CAT CD to 1 3/4 miles.						ALS-F1 		MISSED APPROACH: Climbing right turn to 1600 and intercept NKT R-064 to MEVGE and hold.					
ATIS 127.475 244.875		(E) 119.75 (E) 132.575 (W) 119.35		APP CON 360.775 (abv 2600') 299.6 (at/blw 2600') 377.175 (N) 124.1 268.7			TOWER 121.3 340.2		GND CON 128.625 239.025		CLNC DEL 125.95 316.125		ASR/ PAR



EMERG SAFE ALT 100 NM 4100



TACAN Z RWY 32L

SE-2, 07 AUG 2025 to 04 SEP 2025

SE-2, 07 AUG 2025 to 04 SEP 2025