

RNAV (GPS) RWY 5R

WAAS	APCH CRS	Rwy Idg	8188
Chan 71199	054°	TDZE	27
W05A		Arpt Elev	29

[USN]

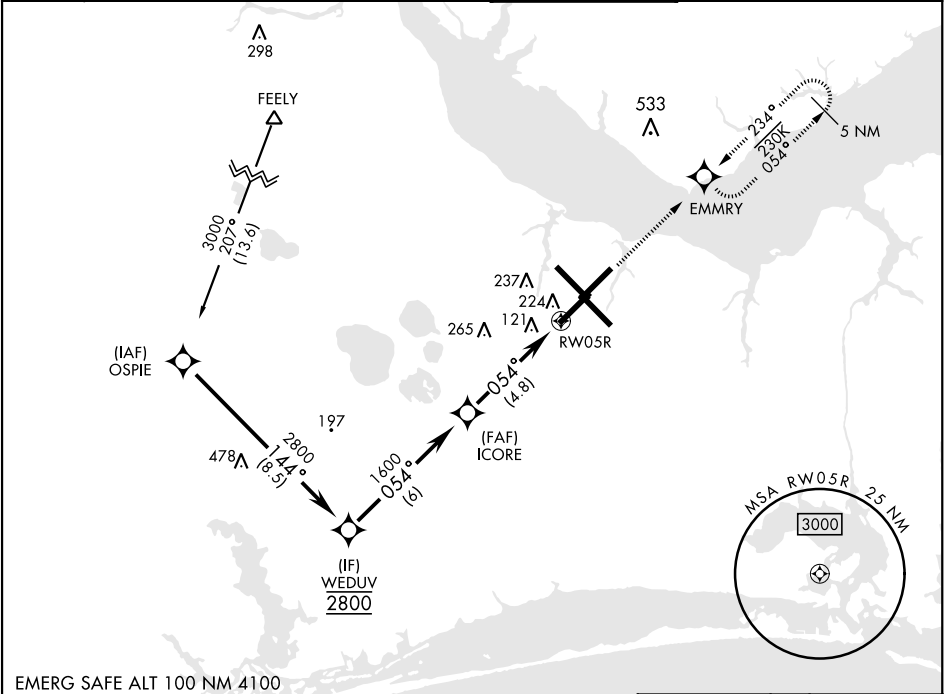
CHERRY POINT MCAS (CUNNINGHAM FLD) (KNKT)

RNP APCH

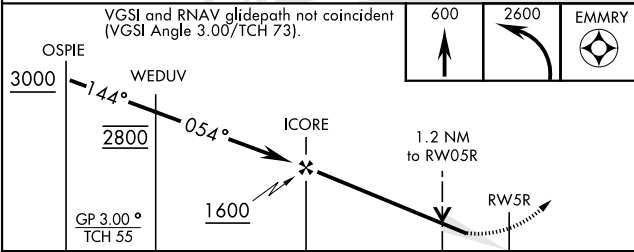
For uncompensated Baro-VNAV systems, LNAV/VNAV NA below -15°C (5°F) or above 54°C (129°F).

MISSED APPROACH: Climb to 600, then climbing left turn to 2600 direct EMMRY and hold. Continue climb in hold to 2600.

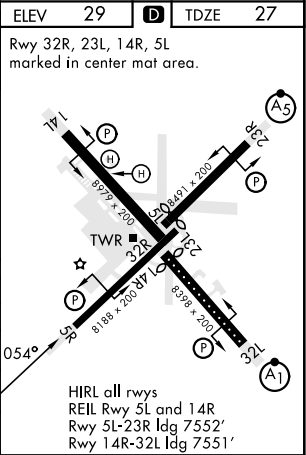
ATIS	APP CON	TOWER	GND CON	CLNC DEL	ASR/ PAR
127.475	(E) 119.75 360.775 (abv 2600')	121.3 340.2	128.625	125.95	
244.875	(E) 132.575 299.6 (at/blw 2600')		239.025	316.125	
	(W) 119.35 377.175 (N) 124.1 268.7				



EMERG SAFE ALT 100 NM 4100



CATEGORY	A	B	C	D
LPV DA	226-¾	200	(200-¾)	
LNAV/VNAV DA	398-1	372	(400-1)	
LNAV MDA	480-1	454 (500-1)	480-1½ 454 (500-1½)	
CIRCLING	580-1	551 (600-1)	580-1½ 551 (600-1½)	580-2 551 (600-2)



RNAV (GPS) RWY 5R

SE-2, 07 AUG 2025 to 04 SEP 2025

SE-2, 07 AUG 2025 to 04 SEP 2025