
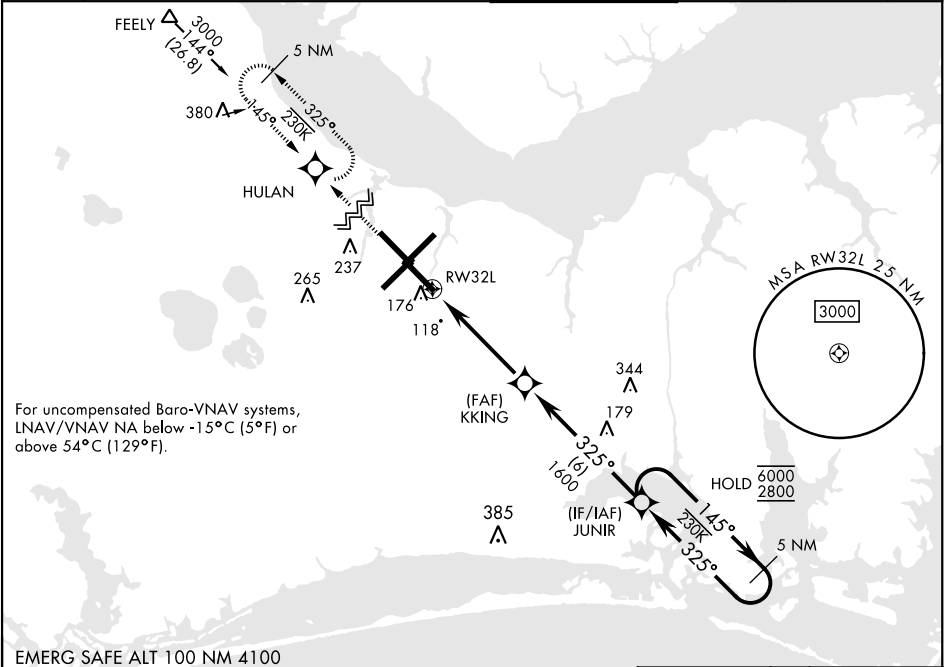


RNAV (GPS) RWY 32L

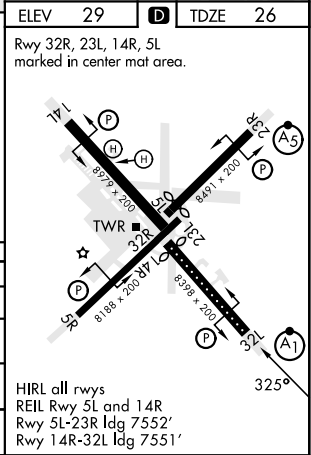
WAAS	APCH CRS	Rwy Idg	7551
Chan <b>54304</b>	<b>325°</b>	TDZE	<b>26</b>
<b>W32A</b>		Arprt Elev	<b>29</b>

[USN] CHERRY POINT MCAS (CUNNINGHAM FLD) (KNKT)

RNP APCH			ALSIF-1		MISSED APPROACH: Climb to 600 then climbing right turn to 2800 direct HULAN and hold.			
▼ *When ALS inop, increase vis to ¾ mile. **When ALS inop, increase vis to 1 mile. ***When ALS inop, increase CAT AB vis to 1 mile, CAT CD vis to 1¼ miles.								
ATIS	(E)	119.75	360.775	(abv 2600')	TOWER	GND CON	CLNC DEL	ASR/ PAR
127.475	(E)	119.75	360.775	(abv 2600')				
244.875	(W)	119.35	377.175	(N) 124.1 268.7				
					121.3 340.2	128.625	125.95	316.125
						239.025		



600		2800	HULAN	VGSI and RNAV glidepath not coincident. (VGSI Angle 3.00/TCH 78)	
↑		↪	⬤	5 NM Holding Pattern	
RW32L		1.2 NM to RW32L	KKKING	325°	6000
				145°	2800
				GP 3.04°	
				TCH 50	
4.8 NM					
CATEGORY	A	B	C	D	
LPV DA*	225-½	200	(200-½)		
LNAV/ VNAV DA**	400-¾	375	(400-¾)		
LNAV MDA***	460-½	435 (500-½)	460-¾	435 (500-¾)	
CIRCLING	580-1	551 (600-1)	580-1½	580-2	
			551 (600-1½)	551 (600-2)	



RNAV (GPS) RWY 32L

SE-2, 07 AUG 2025 to 04 SEP 2025

SE-2, 07 AUG 2025 to 04 SEP 2025