

CHERRY POINT, NORTH CAROLINA

ILS or LOC/DME RWY 23R

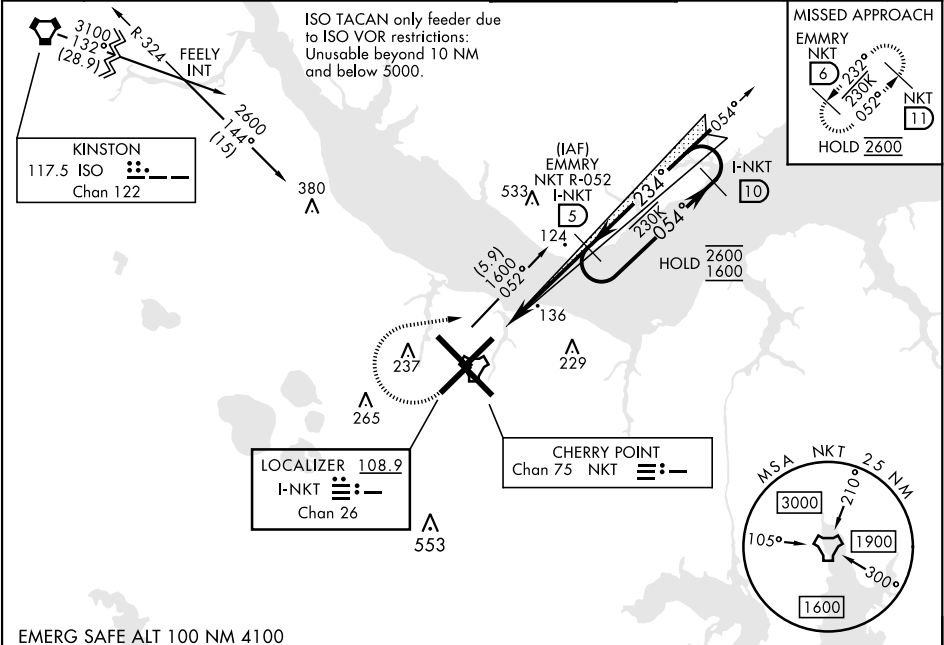
LOC/DME I-NKT	APCH CRS	Rwy Idg
108.9	234°	7552
Chan 26		23
		29

[UN]

CHERRY POINT MCAS (CUNNINGHAM FLD) (KNKT)

TACAN required	MALSR	MISSED APPROACH: Climb to 500, then climbing right turn to 2600 via NKT TACAN R-052 to EMMRY and hold. Continue climb in hold to 2600.
* When ALS inop, increase vis to ¾ mile. ** When ALS inop, increase vis to 1 mile.		

ATIS	APP CON	TOWER	GND CON	CLNC DEL	ASR/PAR
127.475	(E) 119.75 360.775 (abv 2600') (E) 132.575 299.6 (at/bw 2600') (W) 119.35 377.175 (N) 124.1 268.7	121.3 340.2	128.625 239.025	125.95 316.125	



EMERG SAFE ALT 100 NM 4100		ELEV 29 TDZE 23	
		Rwy 32R, 23L, 14R, 5L marked in center mat area.	
CATEGORY		HIRL all rwys REIL Rwy 5L and 14R Rwy 5L-23R Idg 7552' Rwy 14R-32L Idg 7551'	
S-ILS 23R*		FAF to MAP 4.3 NM	
S-LOC 23R**		Knots 60 90 120 150 180	
CIRCLING		Min:Sec 4:18 2:52 2:09 1:43 1:26	

CHERRY POINT, NORTH CAROLINA 34° 54' N-76° 53' W CHERRY POINT MCAS (CUNNINGHAM FLD) (KNKT)

Amtd 1 02NOV23

ILS or LOC/DME RWY 23R

SE-2, 07 AUG 2025 to 04 SEP 2025

SE-2, 07 AUG 2025 to 04 SEP 2025