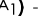
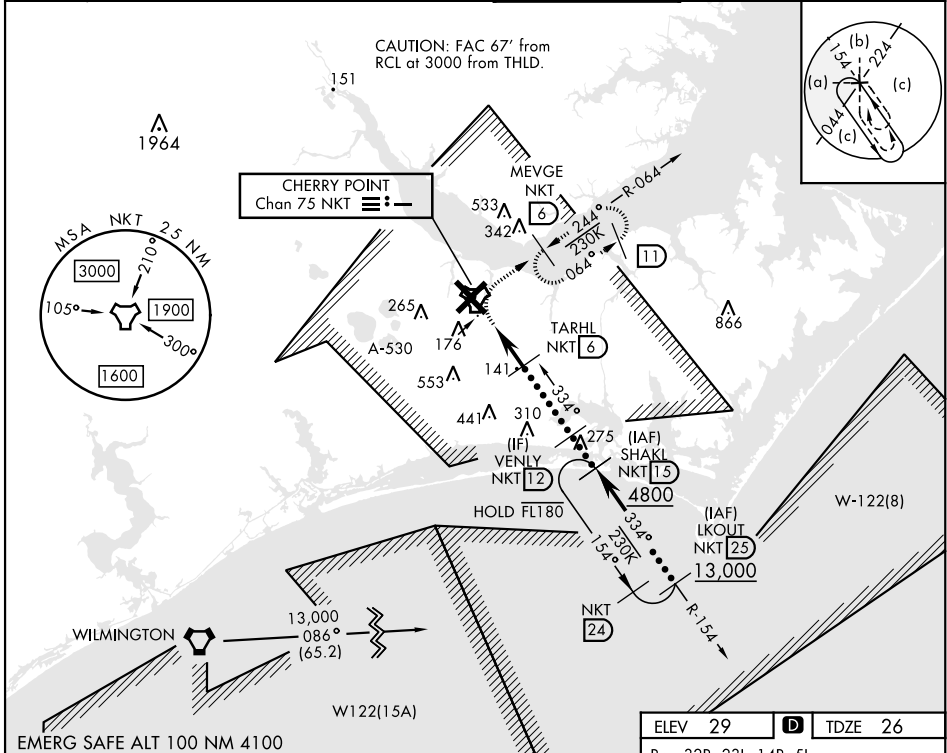


TACAN NKT Chan 75		APCH CRS 334°	Rwy Idg 7551 TDZE 26 Arpt Elev 29	[UN]	CHERRY POINT MCAS (CUNNINGHAM FLD) (KNKT)			
▼ * When ALS inop, increase vis to 1 3⁄8 miles.				ALSF-1 	MISSED APPROACH: Climbing right turn to 1600, intercept NKT R-064 to MEVGE and hold.			
ATIS 127.475 244.875	(E) 119.75 (E) 132.575 (W) 119.35	APP CON 360.775 (abv 2600') 299.6 (at/blw 2600') 377.175 (N) 124.1 268.7			TOWER 121.3 340.2	GND CON 128.625 239.025	CLNC DEL 125.95 316.125	ASR/ PAR



1600
NKT
R-064

MEVGE
NKT
6

VGSi and descent angle not coincident.
(VGSi Angle 3.00/TCH 78)

TACAN

OSHEN
1.2

TARHL
6

VENLY
12

2400

1600

334°

2.95°
TCH 50

0.1

4.8 NM

CATEGORY	C	D	E
S-32L*	460-¾	435	(500-¾)
CIRCLING	580-1½ 551 (600-1½)	580-2 551 (600-2)	700-2½ 671 (700-2½)

1600
NKT
R-064

MEVGE
NKT
6

VGSi and descent angle not coincident.
(VGSi Angle 3.00/TCH 78)

TACAN

OSHEN
1.2

TARHL
6

VENLY
12

2400

1600

334°

2.95°
TCH 50

0.1

4.8 NM

CATEGORY	C	D	E
S-32L*	460-¾	435	(500-¾)
CIRCLING	580-1½ 551 (600-1½)	580-2 551 (600-2)	700-2½ 671 (700-2½)

HIRL all rwy

REIL Rwy 5L and 14R

Rwy 5L-23R ldg 7552'

Rwy 14R-32L ldg 7551'