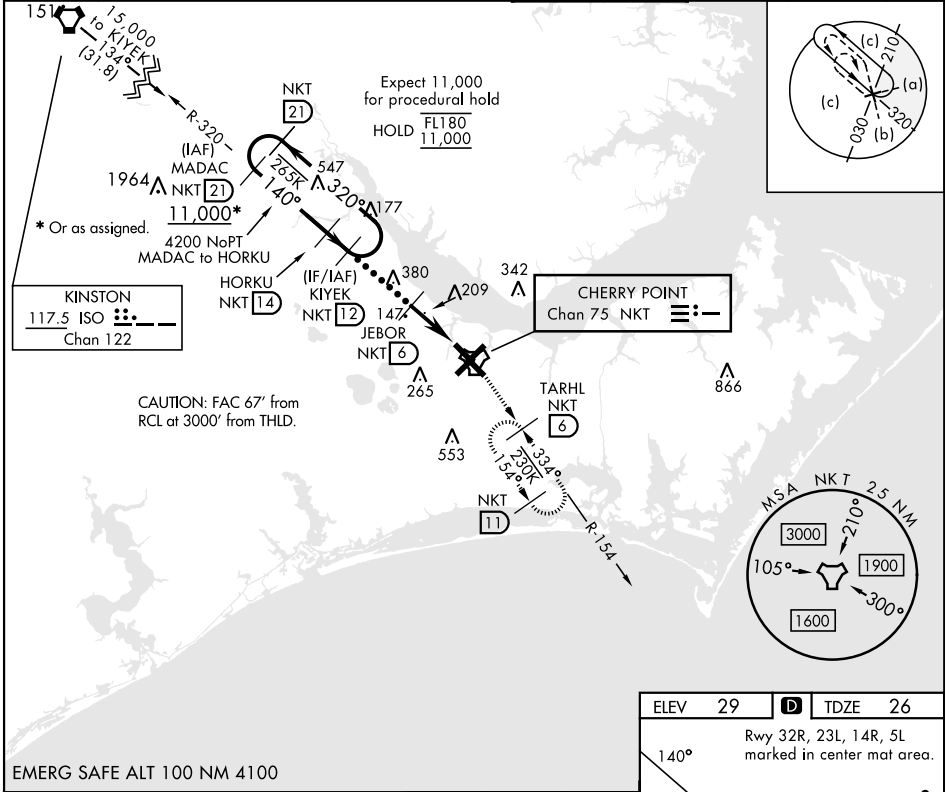


CHERRY POINT, NORTH CAROLINA

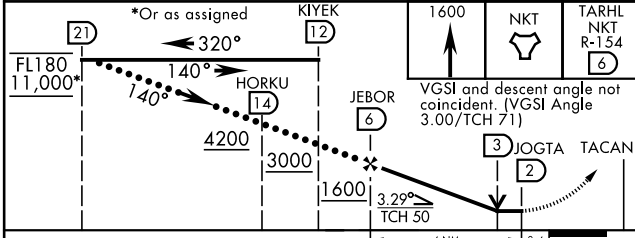
TACAN NKT Chan 75	APCH CRS 140°	Rwy ldg TDZE Arprt Elev	8979 26 29	[USN]	CHERRY POINT MCAS (CUNNINGHAM FLD) (KNKT)
----------------------	------------------	----------------------------	------------------	-------	---

HI-TACAN Y RWY 14L

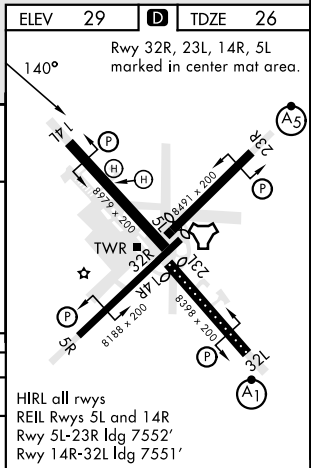
V				MISSED APPROACH: Climb to 1600 to NKT TACAN and fly NKT R-154 to TARHL and hold.					
ATIS		APP CON			TOWER		GND CON	CLNC DEL	ASR/ PAR
127.475	119.75	360.775	(E)	(abv 2600')			128.625	125.95	
244.875	132.575	299.6	(E)	(at/blw 2600')		121.3 340.2	239.025	316.125	
	119.35	377.175	(W)	124.1 268.7 (N)					



EMERG SAFE ALT 100 NM 4100



CATEGORY	C	D	E
S-14L	500-1 $\frac{3}{8}$	474 (500-1 $\frac{3}{8}$)	
CIRCLING	580-1 $\frac{1}{2}$ 551 (600-1 $\frac{1}{2}$)	580-2 551 (600-2)	700-2 $\frac{1}{2}$ 671 (700-2 $\frac{1}{2}$)



CHERRY POINT, NORTH CAROLINA 34° 54' N-76° 53' W CHERRY POINT MCAS (CUNNINGHAM FLD) (KNKT)

Amtd 9 02NOV23

HI-TACAN Y RWY 14L