

PERU, INDIANA

RNAV (GPS) RWY 23

APCH CRS 226°	Rwy Idg 12,501 TDZE 799 Arpt Elev 811
-------------------------	--

- (USAF)

GRISSOM ARB (KGUS)

RNP APCH

ALSF-1

MISSED APPROACH: Climb to 3000 direct JOVON and hold.

* When ALS inop, increase CAT AB RVR to 55 and vis to 1 mile, CAT CDE vis to 1 3/8 miles.

A1

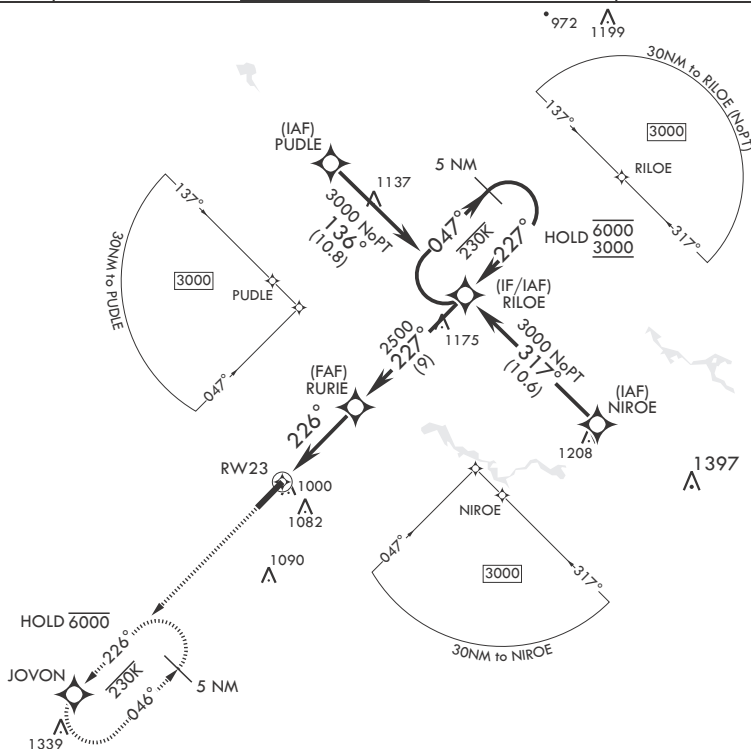
ATIS
132.55 270.8

APP CON/DEP CON
121.05 351.8 E
123.85 291.675 W

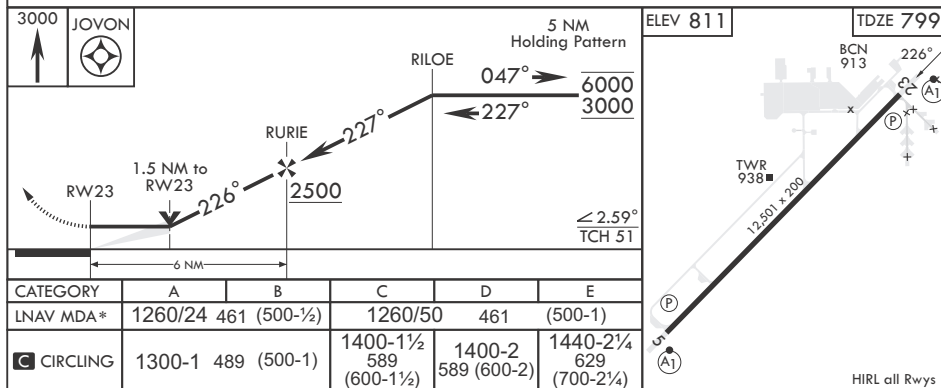
TOWER★
133.7 290.45

GND CON
128.425 275.8

CLNC DEL
128.425 275.8



EMERG SAFE ALT 100 NM 3500



PERU, INDIANA

40°39'N - 86°09'W

GRISSOM ARB (KGUS)

Amdt 7 26DEC24

RNAV (GPS) RWY 23

EC-2, 07 AUG 2025 to 04 SEP 2025