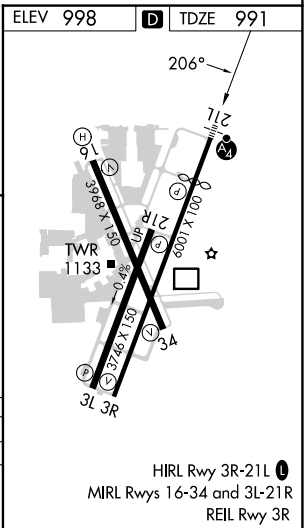
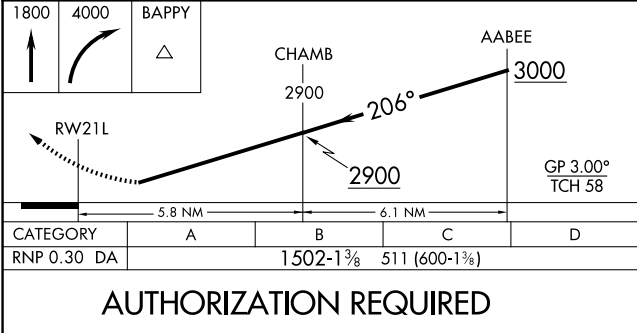
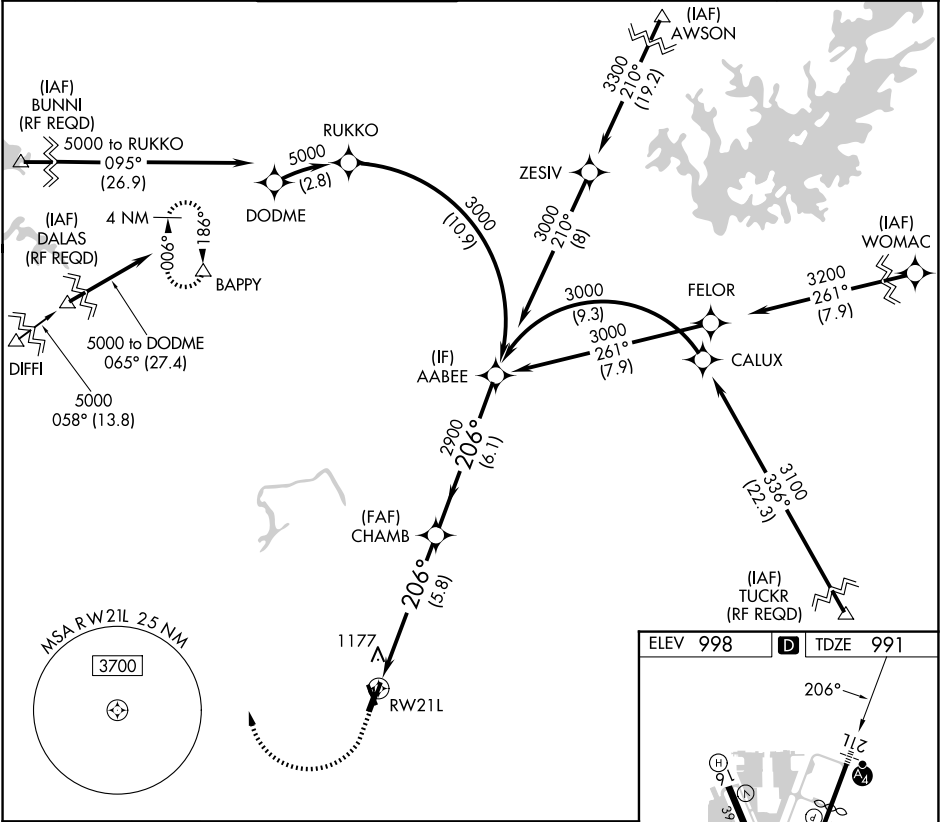


APP CRS	Rwy Ldg	4996
206°	TDZE	991
	Apt Elev	998

RNAV (RNP) Z RWY 21L
DEKALB-PEACHTREE (PDK)

<div><div></div><div>For uncompensated Baro-VNAV systems, procedure NA below 1°C (37°F) or above 54°C (130°F). For inop MALSF, increase RNP 0.30 all Cats visibility to 1¾. GPS required.</div></div>	<div><div>MALSF</div><div><div></div><div></div></div></div>	<div>MISSED APPROACH: Climb to 1800 then climbing right turn to 4000 direct BAPPY and hold.</div>
---	--	---

ATIS 128.4	ATLANTA APP CON 126.975 239.275	PEACHTREE TOWER ★ 120.9(CTAF) 281.5	GND CON 121.6	CLNC DEL 125.2	CLNC DEL 120.9 (When twr closed)	UNICOM 122.95	120.0
---------------	------------------------------------	--	------------------	-------------------	--	------------------	-------



SE-4, 07 AUG 2025 to 04 SEP 2025

SE-4, 07 AUG 2025 to 04 SEP 2025