

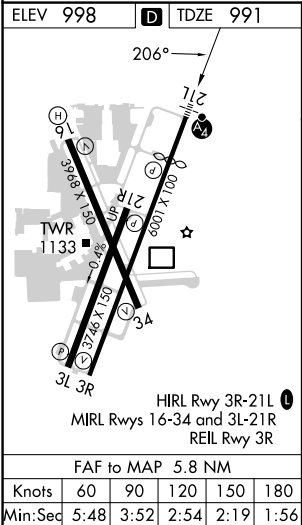
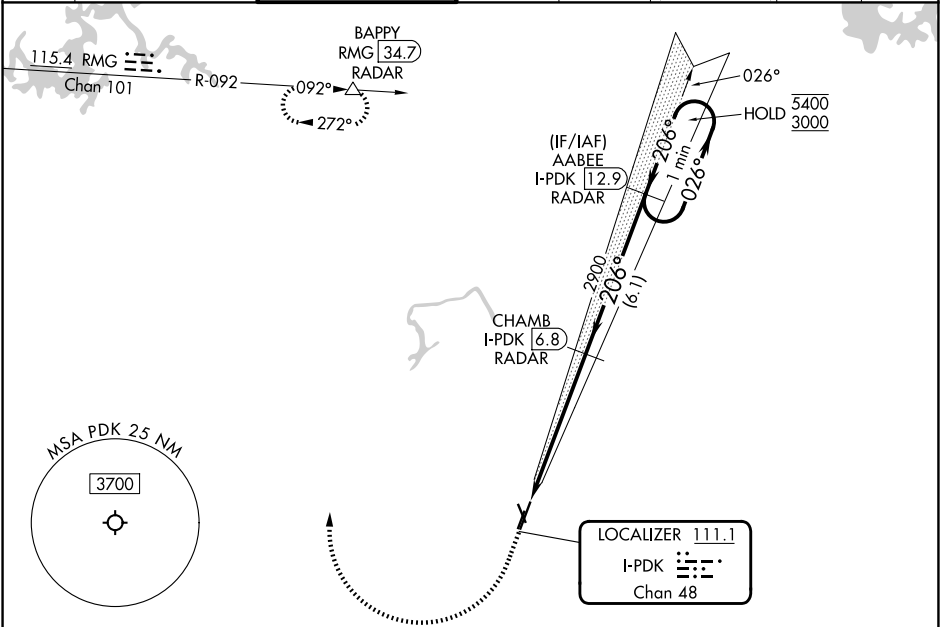


LOC/DME I-PDK 111.1 Chan 48	APP CRS 206°	Rwy Ldg TDZE 991 Apt Elev 998	ILS or LOC RWY 21L DEKALB-PEACHTREE (PDK)	
--	------------------------	---	--	--

RADAR required for procedure entry. DME or RADAR required.		MALSF 	MISSED APPROACH: Climb to 1600 then climbing right turn to 4000 on heading 008° and on RMG VORTAC R-092 to BAPPY/RMG 34.7 DME/RADAR and hold.
	Circling Rwy 16, 34 NA at night. Rwy 21L helicopter visibility reduction below RVR 4000 NA.		

ATIS 128.4	ATLANTA APP CON 126.975 239.275	PEACHTREE TOWER ★ 120.9 (CTAF) 281.5	GND CON 121.6	CLNC DEL 125.2	CLNC DEL 120.9 (When twr closed)	UNICOM 122.95	120.0
----------------------	---	---	-------------------------	--------------------------	---	-------------------------	--------------



1600	4000	RMG R-092	BAPPY	VGSI and ILS glidepath not coincident (VGSI Angle 3.00°/TCH 55).		One Minute Holding Pattern	
↑		hdg 008°	△	Glideslope unusable for coupled approach below 1900.		AABEE I-PDK [12.9] RADAR	
				CHAMB I-PDK [6.8] RADAR		2900	
				I-PDK [0.9]		I-PDK [2.4]	
				1.5 NM		4.3 NM	
				6.1 NM		2900	
				206°		026°	
				2900		5400	
				206°		3000	
				GS 3.00°		TCH 58	
				CATEGORY		A	
				S-ILS 21L		1330/40	
				S-LOC 21L		1520/40 529 (600-¾)	
				CIRCLING		1840-2½ 842 (900-2½)	