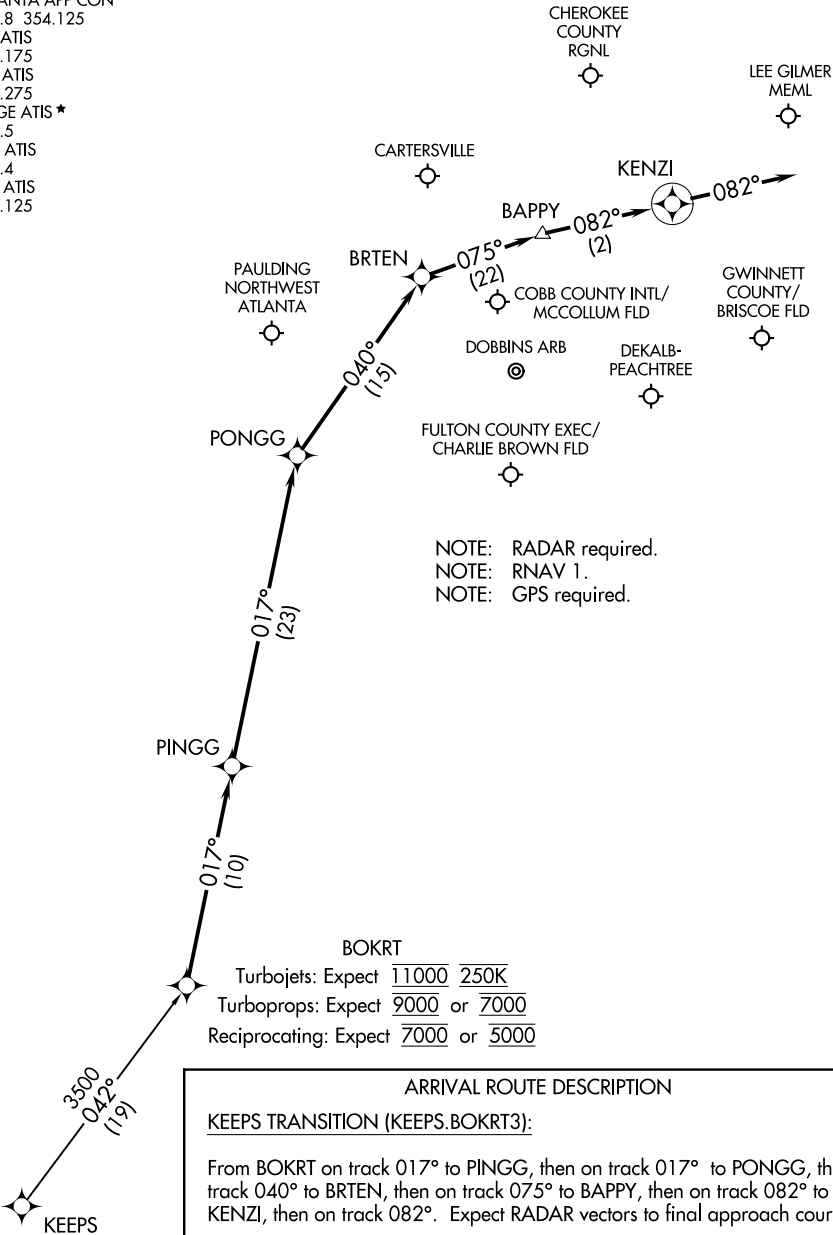


ATLANTA APP CON
119.8 354.125
FTY ATIS
120.175
LZU ATIS
132.275
KMGE ATIS ★
269.5
PDK ATIS
128.4
RYY ATIS
128.125



BOKRT
Turbojets: Expect 11000 250K
Turboprops: Expect 9000 or 7000
Reciprocating: Expect 7000 or 5000

ARRIVAL ROUTE DESCRIPTION

KEEPS TRANSITION (KEEPS.BOKRT3):

From BOKRT on track 017° to PINGG, then on track 017° to PONGG, then on track 040° to BRTEN, then on track 075° to BAPPY, then on track 082° to KENZI, then on track 082°. Expect RADAR vectors to final approach course.

LOST COMMUNICATIONS: Cross BOKRT at or below 11 000, cross PONGG at or below 7000, cross KENZI at 5000; after KENZI proceed direct to the IAF for desired approach to filed airport.

NOTE: Chart not to scale.