


DETROIT, MICHIGAN

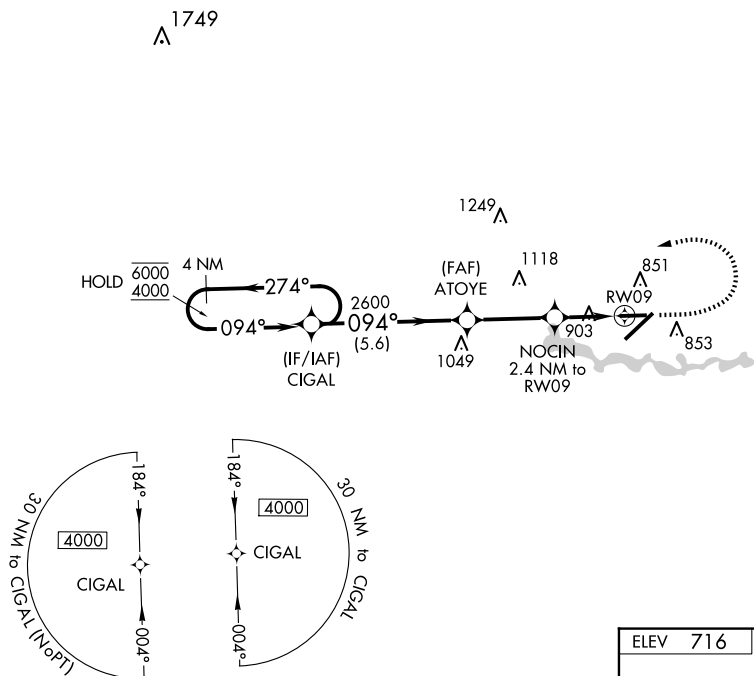
AL-467 (FAA)

24305

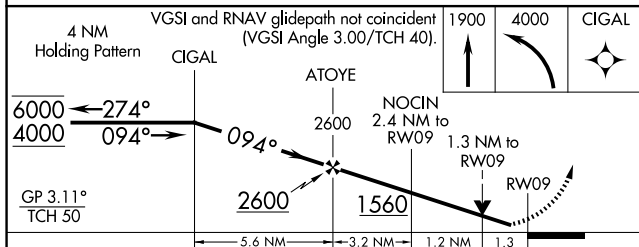
WAAS CH 73035 W09A	APP CRS 094°	Rwy Idg TDZE Apt Elev	5001 716 716
--	------------------------	-----------------------------	---

RNAV (GPS) RWY 9
WILLOW RUN (YIP)

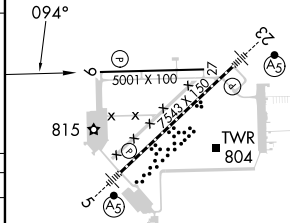
RNP APCH - GPS.			MISSED APPROACH: Climb to 1900 then climbing left turn to 4000 direct CIGAL and hold, continue climb-in-hold to 4000.
<div> <div>  </div> <div> Rwy 9 helicopter visibility reduction below $\frac{3}{4}$ SM NA. For uncompensated Baro-VNAV systems, LNAV/VNAV NA below -21°C or above 54°C. </div> </div>			
ATIS 127.425	DETROIT APP CON 118.95 284.0	WILLOW RUN TOWER 125.275 256.9	GND CON 119.975



ELEV	716	D	TDZE	716
------	-----	----------	------	-----



CATEGORY	A	B	C	D
LPV DA	966- ³ / ₄ 250 (300- ³ / ₄)			
LNAV/ VNAV DA	1201-1 ³ / ₈ 485 (500-1 ³ / ₈)			
LNAV MDA	1160-1 444 (500-1)		1160-1 ³ / ₈ 444 (500-1 ³ / ₈)	
C CIRCLING	1220-1 504 (600-1)		1220-1 ¹ / ₂ 504 (600-1 ¹ / ₂)	1400-2 ¹ / ₄ 684 (700-2 ¹ / ₄)



TDZ/CL Rwy 5
HIRL Rwy 5-23
MIRL Rwy 9-27

DETROIT, MICHIGAN
Amdt 3 30NOV23

42°14'N-83°32'W

WILLOW RUN (YIP)
RNAV (GPS) RWY 9

EC-1, 07 AUG 2025 to 04 SEP 2025