

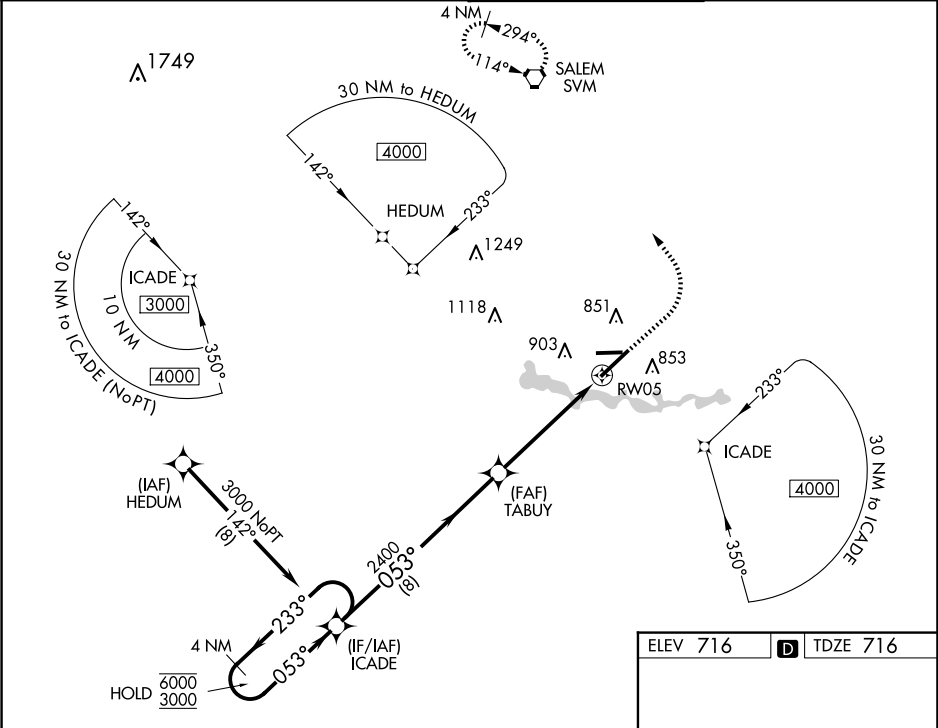
WAAS CH 78144	APP CRS 053°	Rwy Idg TDZE 716	7543
W05A		Apt Elev	716

RNAV (GPS) RWY 5

WILLOW RUN (YIP)

RNP APCH - GPS.	MALSR	MISSED APPROACH: Climb to 1200 then climbing left turn to 3000 direct SVM VORTAC and hold.
▼ For uncompensated Baro-VNAV systems, LNAV/VNAV NA below -19°C or above 54°C. For inop ALS, increase LNAV/VNAV all Cats visibility to RVR 6000, LNAV Cats C/D visibility to 1 3⁄8 SM.		

ATIS 127.425	DETROIT APP CON 118.95 284.0	WILLOW RUN TOWER 125.275 256.9	GND CON 119.975
------------------------	--	--	---------------------------



ELEV 716	D	TDZE 716
----------	----------	----------

4 NM Holding Pattern			
VGSI and RNAV glidepath not coincident (VGSI Angle 3.00/TCH 75).			
ICADE			
TABUY			
RW05			
1.2 NM to RW05			
GP 3.00° TCH 59			
8 NM			
3.9 NM			
1.2			
CATEGORY	A	B	C
LPV DA	916/18 200 (200-1⁄2)		
LNAV/VNAV DA	1121/40 405 (500-3⁄4)		
LNAV MDA	1200/24	484 (500-1⁄2)	1200/50 484 (500-1)
CIRCLING	1220-1	504 (600-1)	1220-1 1⁄2 504 (600-1 1⁄2) 1400-2 1⁄4 684 (700-2 1⁄4)

