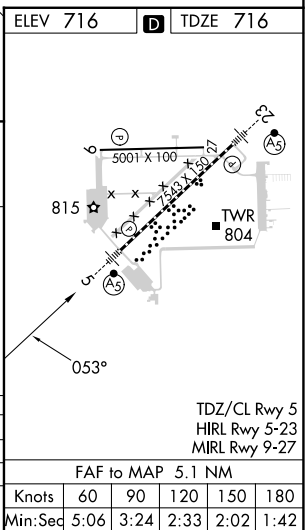


ILS or LOC RWY 5
WILLOW RUN (YIP)

ATIS 127.425	DETROIT APP CON 118.95 284.0	WILLOW RUN TOWER 125.275 256.9	GND CON 119.975
-----------------	---------------------------------	-----------------------------------	--------------------



VGSI and ILS glidepath not coincident
(VGSI Angle 3.00°/TCH 75).

Remain within 10 NM

233°

2400

053°

GS 3.00°
TCH 59

2400

TABUY INT
I-YIP 6.5

2400

I-YIP 2.7

I-YIP 1.4

3.8 NM

1.3 NM

CATEGORY	A	B	C	D
S-ILS 5		916/18	200 (200-½)	
S-LOC 5	1200/24	484 (500-½)	1200/50	484 (500-1)
C CIRCLING	1220-1	504 (600-1)	1220-1½ 504 (600-1½)	1400-2¼ 684 (700-2¼)

EC-1, 07 AUG 2025 to 04 SEP 2025

EC-1, 07 AUG 2025 to 04 SEP 2025