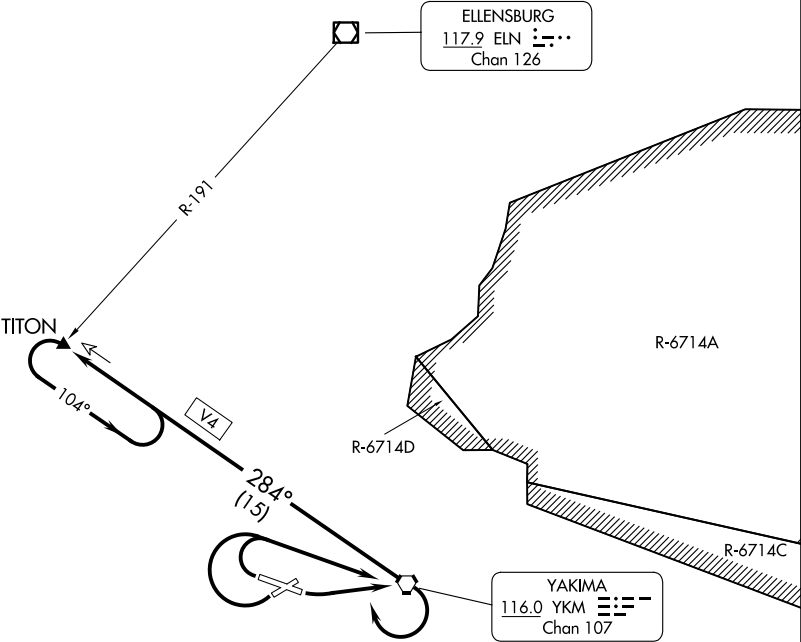


SPOKANE DEP CON ★
123.8 263.15
ATIS
125.25
CLNC DEL
121.9
GND CON
121.9
YAKIMA TOWER ★
133.25 257.8



TAKEOFF MINIMUMS

- Rwy 4: NA - obstacles.
Rwy 9: Standard with minimum climb of 325' per NM to 5000.
Rwy 22: Standard with minimum climb of 325' per NM to 5000.
Rwy 27: Standard with minimum climb of 325' per NM to 5000.

NOTE: Chart not to scale.



DEPARTURE ROUTE DESCRIPTION

TAKEOFF RUNWAY 9: Climbing left turn direct YKM VORTAC, Thence. . . .
TAKEOFF RUNWAYS 22, 27: Climbing right turn direct YKM VORTAC. Thence. . . .
. . . .then climbing right turn to intercept YKM R-284 outbound to TITON INT and hold.
Continue climb in hold to MEA/MCA for route of flight. Then on (assigned route).