

VORTAC YKM <b>116.0</b> Chan <b>107</b>	APP CRS <b>244°</b>	Rwy Idg <b>7604</b> TDZE <b>1068</b> Apt Elev <b>1099</b>
---	------------------------	---

VOR/DME or TACAN RWY 27  
YAKIMA AIR TRML/MCALLISTER FLD (YKM)

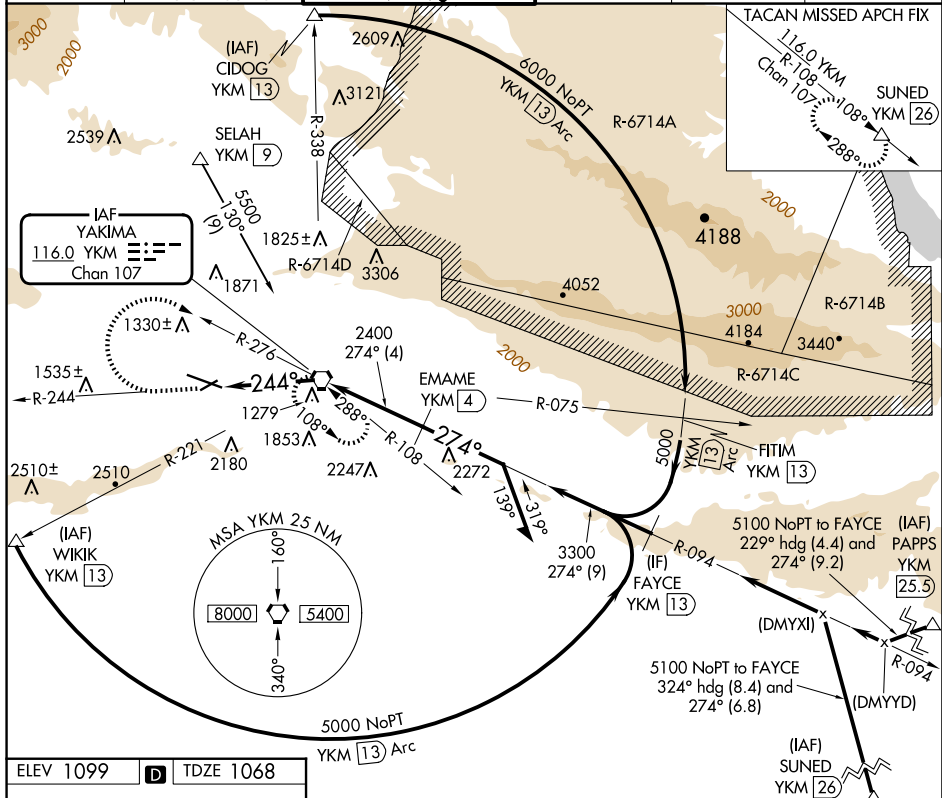
YAKIMA AIR TRML /MCALLISTER FLD (YKM)

<b>T</b>	Inoperative table does not apply.
<b>A</b>	Circling NA south of Rwy 9-27. When local altimeter setting not received, procedure NA.

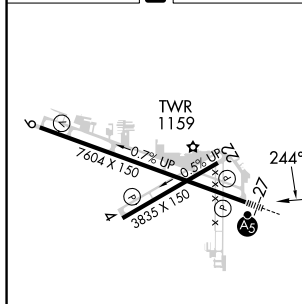


**MISSED APPROACH:** Climb to 2600 via YKM VORTAC R-244, then climbing right turn to 4600 via YKM VORTAC R-276 to YKM VORTAC and hold, continue climb-in-hold to 4600 (TACAN aircraft, continue climb to 5000 via YKM VORTAC R-108 to SUNED/YKM 26 DME and hold west. right turns. 108° inbound).

ATIS 125.25	SPOKANE APP CON★ 123.8 263.15	YAKIMA TOWER★ 133.25 (CTAF) 0 257.8	GND CON 121.9	CLNC DEL 121.9	UNICOM 122.95
----------------	----------------------------------	--	------------------	-------------------	------------------



ELEV 1099	<b>D</b>	TDZE 1068
-----------	----------	-----------



MIRL Rwy 4-22  
HIRL Rwy 9-27 **L**  
REIL Rwy 4, 9, and 22

Diagram illustrating a step climb procedure for a YKM R-244 approach. The diagram shows a 3.6 NM segment at 2400 feet, followed by a 4 NM segment at 3300 feet, and a final segment at 4400 feet. The climb angle is 3.40 degrees (TCH 57). The diagram also shows the YKM R-244 and YKM R-276 approaches, and the YKM VORTAC. The diagram includes a note: "VGSI and descent angles not coincident (VGSI Angle 3.00/TCH 57)". The diagram also includes a note: "Remain within 10 NM".