

WAAS CH 90512 W27A	APP CRS 274°	Rwy Idg TDZE Apt Elev	7604 1068 1099
--	------------------------	-----------------------------	---

RNAV (GPS) X RWY 27

YAKIMA AIR TRML/MCALLISTER FLD (YKM)

RNP APCH.

▼ Circling NA south of Rws 9 and 27.

▲ For inop ALS, increase LPV all Cats visibility to 1¾ SM.

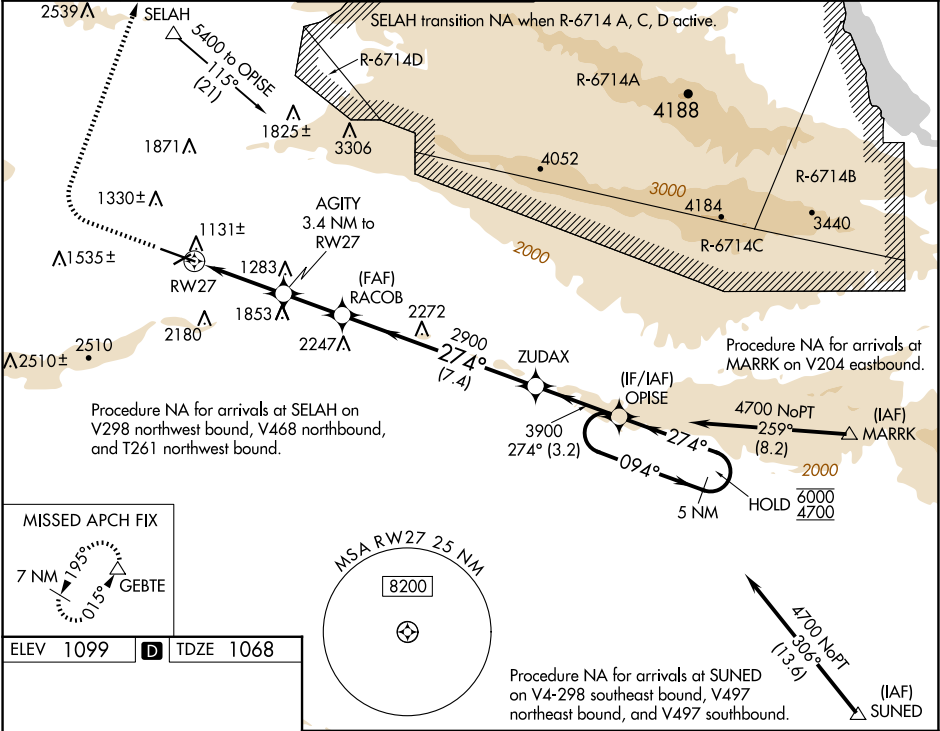
* RVR 1800 authorized with use of FD or AP or HUD to DA.

MALSR

A5

MISSED APPROACH: Climb to 2100 then climbing right turn to 7000 direct GEBTE and hold. Continue climb-in-hold to 7000. *Missed approach requires minimum climb of 300 feet per NM to 3700. #Missed approach requires minimum climb of 300 feet per NM to 4900.

ATIS 125.25	SPOKANE APP CON* 123.8 263.15	YAKIMA TOWER* 133.25 (CTAF) 257.8	GND CON 121.9	CLNC DEL 121.9	UNICOM 122.95
-----------------------	---	---	-------------------------	--------------------------	-------------------------



ELEV 1099	D	TDZE 1068
-----------	----------	-----------

TWR 1159

7604 X 150

3835 X 150

274°

MIRL Rwy 4-22

HIRL Rwy 9-27

REIL Rws 4, 9, and 22

2100

7000

GEBTE

*LNAV only

*0.9 NM to RW27

RW27

AGITY 3.4 NM to RW27

RACOB

ZUDAX

OPISE

5 NM Holding Pattern

094°

274°

6000

4700

GP 3.00°

TCH 57

CATEGORY	A	B	C	D
LPV DA*	1268/24	200 (200-½)		
LPV DA	1668-1¼	600 (600-1¼)		
LNAV MDA#	1400/24	332 (400-½)	1400/26	332 (400-½)
LNAV MDA	1720/24	652 (700-½)	1720-1¾	652 (700-1¾)
C CIRCLING	1720-1	621 (700-1)	1880-2¼	2280-3
			781 (800-2¼)	1181 (1200-3)