

APP CRS	Rwy Idg	7604
274°	TDZE	1068
	Apt Elev	1099

RNAV (RNP) Z RWY 27

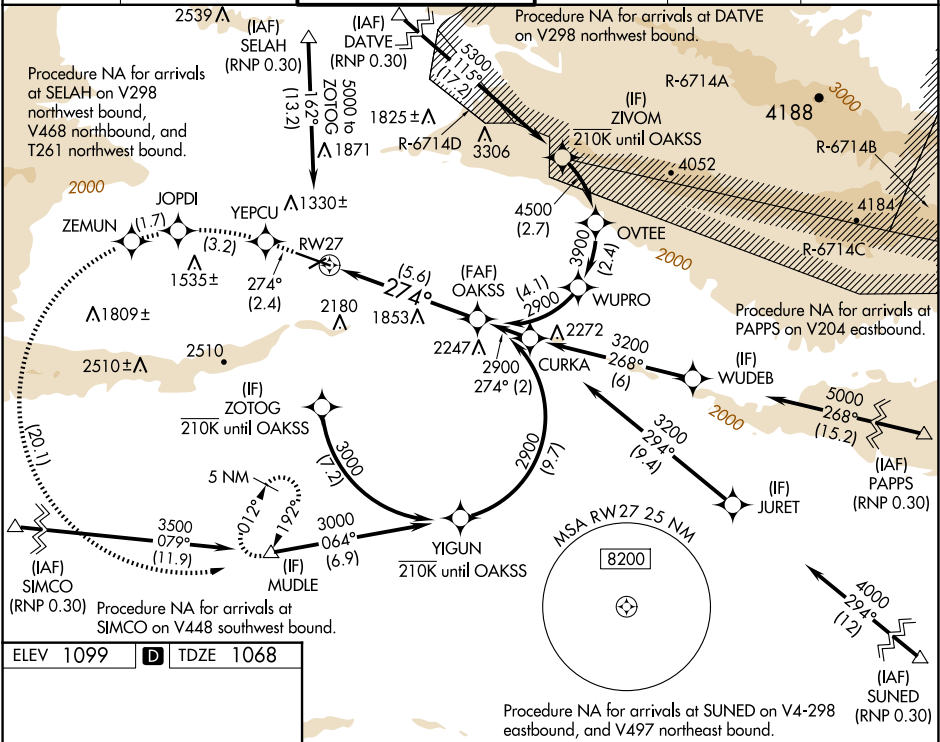
YAKIMA AIR TRML/MCALLISTER FLD (YKM)

For uncompensated Baro-VNAV systems, procedure NA below -17°C (2°F) or above 54°C (130°F). RF required. GPS required. Missed approach requires RNP less than 1.0. For inop ALS increase *RNP 0.10 DA visibility all Cts to RVR 4500 and RNP 0.30 DA visibility all Cts to 1 1/2 SM. DATVE transition NA when R-6714 A, C, D active.

MALS

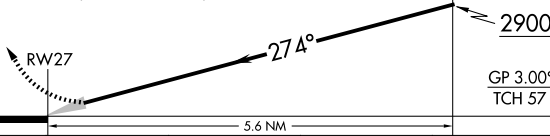
MISSED APPROACH: Climb to 5100 on track 274° to YEPCU left turn to JOPDI left turn to ZEMUN left turn to MUDLE and hold.
* Missed approach requires a minimum climb of 215 feet per NM to 4300.

ATIS 125.25	SPOKANE APP CON* 123.8 263.15	YAKIMA TOWER* 133.25 (CTAF) 0 257.8	GND CON 121.9	CLNC DEL 121.9	UNICOM 122.95
----------------	----------------------------------	--	------------------	-------------------	------------------



ELEV 1099 TDZE 1068

MIRL Rwy 4-22
HIRL Rwy 9-27
REIL Rwy 4, 9, and 22

5100 ↑ tr 274°	YEPCU ✧	JOPDI ✧	ZEMUN ✧	MUDLE △	OAKSS 2900
See planview for multiple IF locations.					
					
CATEGORY	A	B	C	D	
RNP 0.10 DA*	1348/24 280 (300-½)				
RNP 0.30 DA	1468/45 400 (400-¾)				
AUTHORIZATION REQUIRED					