

APP CRS	Rwy Idg	7604
094°	TDZE	1099
	Apt Elev	1099

RNAV (RNP) RWY 9

YAKIMA AIR TRML/MCALLISTER FLD (YKM)

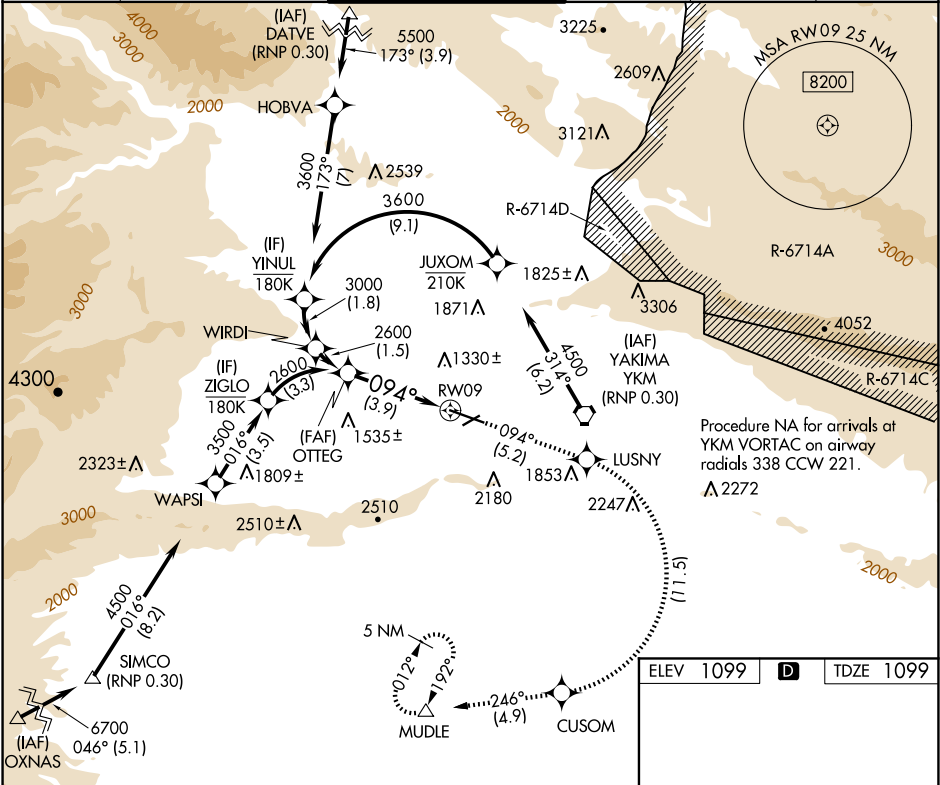
⚠

RF required. GPS required. For uncompensated Baro-VNAV systems, procedure NA below -17°C (2°F) or above 45°C (113°F).
* Missed approach requires a minimum climb of 425 feet per NM to 3000.

MISSED APPROACH:

Climb to 5100 on track 094° to LUSNY right turn to CUSOM and on track 246° to MUDLE and hold.

ATIS	SPOKANE APP CON★	YAKIMA TOWER★	GND CON	CLNC DEL	UNICOM
125.25	123.8 263.15	133.25 (CTAF) 0 257.8	121.9	121.9	122.95



OTTEG

2600

GP 3.50°

TCH 57

5100

LUSNY

CUSOM

MUDLE

VGSi and RNAV glidepath not coincident

(VGSi Angle 3.00/TCH 54).

2600

094°

See planview for multiple IF locations.

3.9 NM

CATEGORY	A	B	C	D
RNP 0.30 DA*	1473-1	374 (400-1)		NA
RNP 0.30 DA	1934-2½	835 (900-2½)		NA

AUTHORIZATION REQUIRED

YAKIMA, WASHINGTON

Orig-B 25MAY17

YAKIMA AIR TRML/MCALLISTER FLD (YKM)

46°34'N-120°33'W

RNAV (RNP) RWY 9

ELEV 1099

TDZE 1099

094°

TWR 1159

7604 X 150

3835 X 150

0.7% UP

0.6% UP

27

AS

MIRL Rwy 4-22

MIRL Rwy 9-27

REIL Rwys 4, 9, and 22

NW-1, 07 AUG 2025 to 04 SEP 2025

NW-1, 07 AUG 2025 to 04 SEP 2025