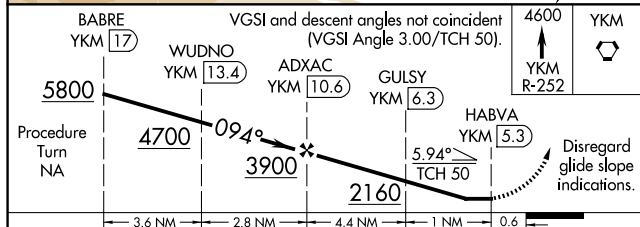
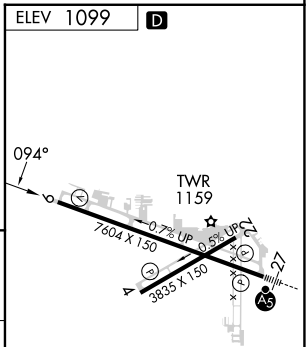


LOC/DME BC-B
YAKIMA AIR TRML/MCALLISTER FLD (YKM)

<p>Simultaneous reception of I-YKM and YKM DME required. Circling NA south of Rwy 9-27. When local altimeter setting not received, procedure NA.</p>	<p>MISSED APPROACH: Climb to 4600 via YKM VORTAC R-252 to YKM VORTAC and hold, continue climb-in-hold to 4600.</p>
--	--



MIRL Rwy 4-22
HIRL Rwy 9-27 **L**
REIL Rwy 4, 9, and 22