

WAAS
CH **93831**
W13A

APP CRS
132°

Rwy Idg
TDZE
2822
Apt Elev
2822

RNAV (GPS) RWY 13

WINKLER COUNTY (INK)

RNP APCH - GPS.

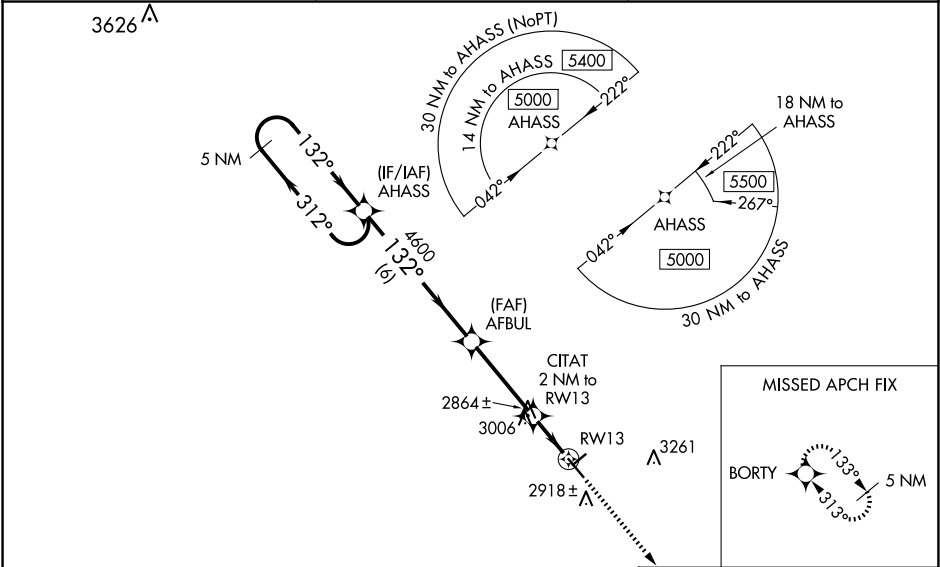
▼

▲

Baro-VNAV NA when using Pecos altimeter setting. For uncompensated Baro-VNAV systems, LNAV/VNAV NA below -20°C or above 54°C. VDP NA with Pecos altimeter setting. Rwy 13 helicopter visibilities reduction below ¾ SM NA. When local altimeter setting not received, use Pecos altimeter setting: increase LPV DA to 3167 feet and all Cats visibilities ¼ SM; increase LNAV/VNAV DA to 3167 feet and all Cats visibilities ¼ SM; increase all MDAs 100 feet and LNAV Cat C visibility ¾ SM and Circling Cat C visibility ¼ SM.

MISSED APPROACH:
Climb to 5000 direct BORTY and hold.

ASOS 118.325	FORT WORTH CENTER 133.1 298.95	UNICOM 123.0 (CTAF) 0
------------------------	--	---------------------------------



5 NM Holding Pattern

AHASS

5000

312°

132°

GP 3.00°

TCH 45

AFBUL

4600

CITAT

2 NM to RW13

0.8 NM to RW13

RW13

3500

6 NM

3.4 NM

1.2 NM

0.8

ELEV 2822

TDZE 2822

132°

3514 X 100

5003 X 100

31

CATEGORY	A	B	C	D
LPV DA	3072-¾	250 (300-¾)		NA
LNAV/VNAV DA	3072-¾	250 (300-¾)		NA
LNAV MDA	3320-1	498 (500-1)	3320-1⅜ 498 (500-1⅜)	NA
CIRCLING	3320-1	498 (500-1)	3580-2¼ 758 (800-2¼)	NA

MIRL Rwy 4-22 and 13-31 0