

APP CRS	Rwy Ldg	9509
238°	TDZE	170
	Apt Elev	173

RNAV (RNP) Z RWY 24
BRADLEY INTL (BDL)

BRADLEY INTL (BDL)



For uncompensated Baro-VNAV systems, procedure NA below -18°C (0°F) or above 54°C (130°F). GPS required.
For inop ALS, increase all Cats visibility to 1½ SM.

MALSR



MISSED APPROACH: Climb to 3000
on track 238° to PENNA and hold.

D-ATIS
118.15

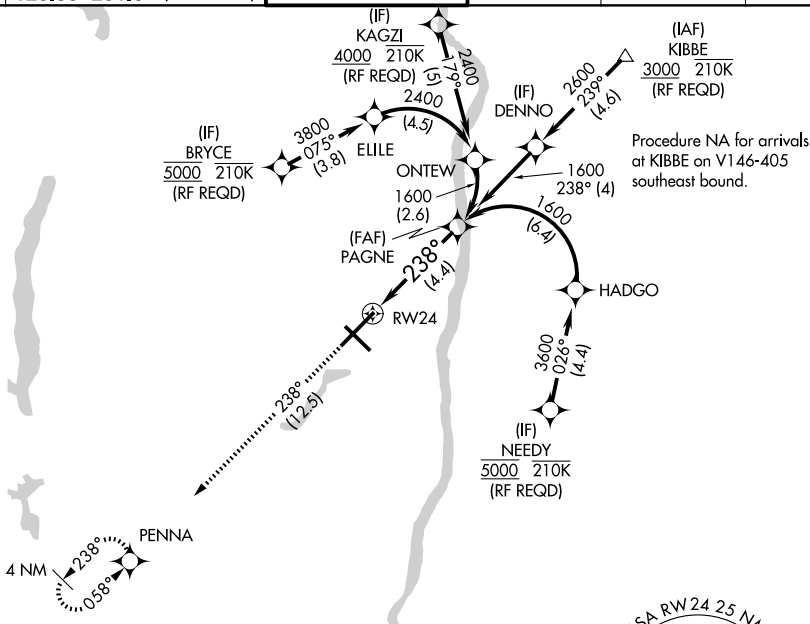
YANKEE APP CON
123.95 290.55 (061°-240°)
125.35 281.5 (241°-060°)

BRADLEY TOWER
120.3 351.8

GND CON
121.9 348.6

CLNC DEL
121.75 322.3

CPDLC

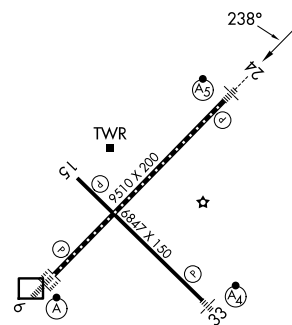


NE-1, 07 AUG 2025 to 04 SEP 2025

ELEV 173	D	TDZE 170
----------	----------	----------

D


D	TDZE 170
---	----------



TDZ/CL Rwy 6 and 24
HIRL Rwy 6-24 and 15-33
REIL Rwy 6 and 15

WINDSOR LOCKS, CONNECTICUT

Amdt 1 29MAR18

3000 ↑ tr 238°	PENNA 
----------------------	--

VGSI and RNAV glidepath not coincident (VGSI Angle 3.00/TCH 71).

PAGNE

1600

1600

	GP 3.00°
	TCH 55

See planview for multiple IF locations.

- 44 NM

CATEGORY

A

RNP 0.30 DA

622/60	452 (500-1¼)
--------	--------------

AUTHORIZATION REQUIRED

BRADLEY INTL (BDL)

41°56'N-72°41'W

RNAV (RNP) Z RWY 24